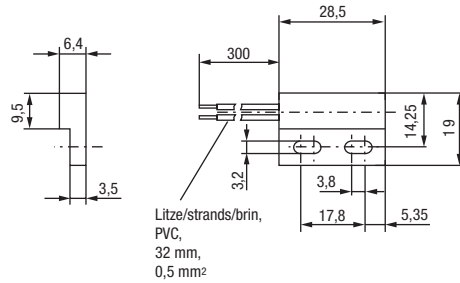


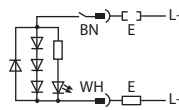
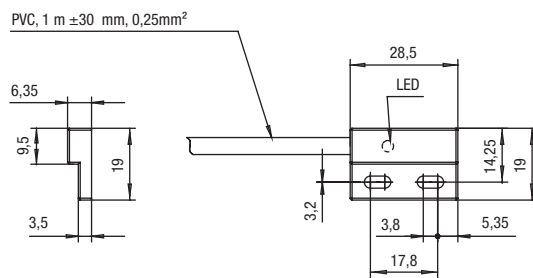
Flachschalter Surface mount switches Interrupteurs plats

151 SG 0.0



151 SG 010 03-1

Mit LED
With LED
Avec LED



Typen Nr. type no. référence	Schaltspannung switching voltage tension de commut.	Schaltstrom switching current courant de commut.	Schaltleistung switching power pouvoir de coupure	Kontaktform* contact form* type de contact*
151 SG 010	max. 48 V	max. 0,5 A	max. 10 W / 10 VA	A
151 SG 020	max. 48 V	max. 0,3 A	max. 3 W / 3 VA	B
151 SG 010 03-1	max. 24 V DC	max. 0,2 A	max. 10 W / 10 VA	A

Typen Nr. type no. référence	Schutzart protection class protection	Temperaturbereich temperature range plage de température	Material material matériaux
151 SG 0.0	IP 67	-25...+75°C	PA
153 ..0			PEI
151 SG 010 03-1			PEI

* A = Schließer, B = Öffner, C = Wechsler
A = N.O., B = N.C., C = C.O.
A = NO, B = NF, C = inverseur