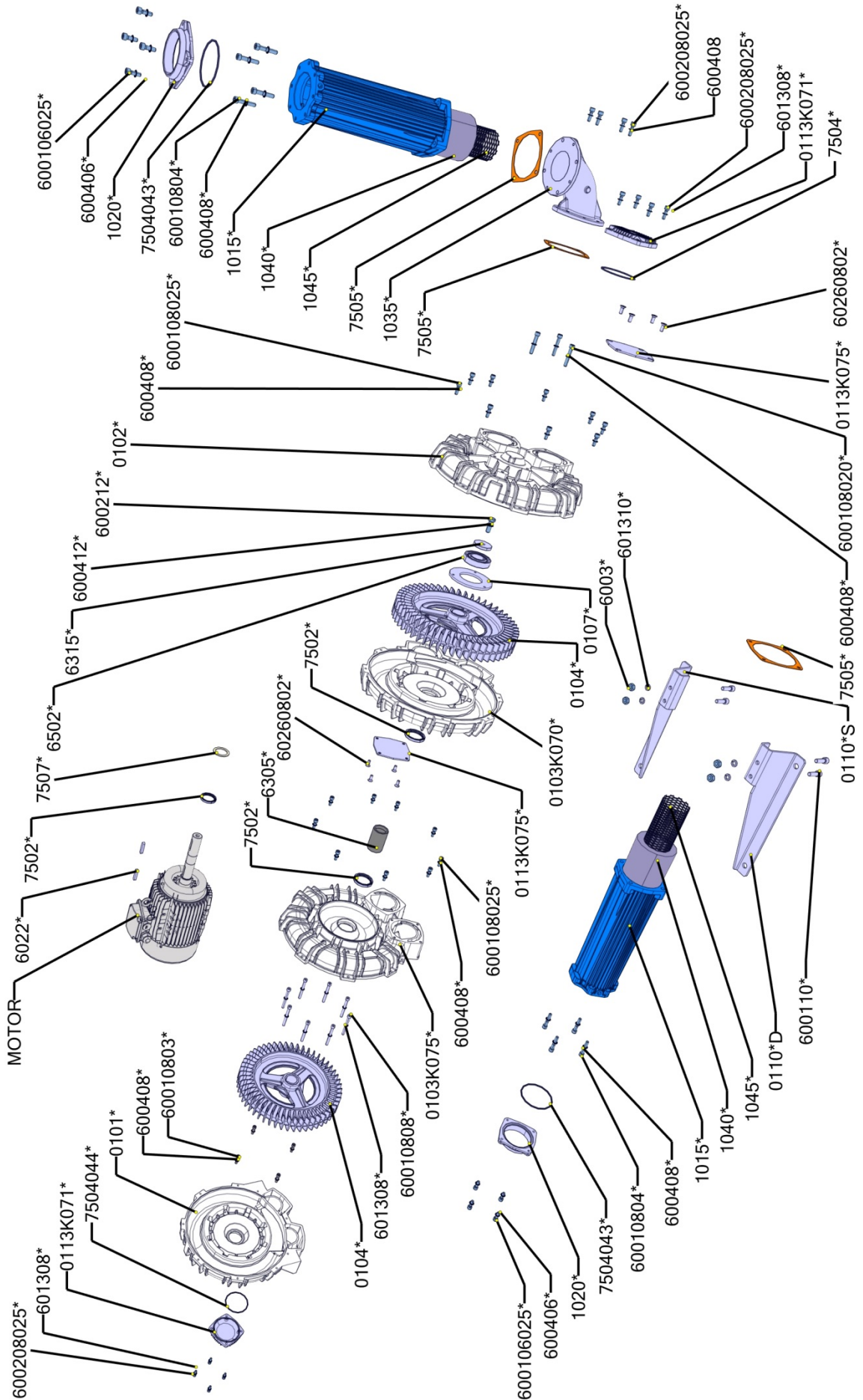


FPZ
BLOWER TECHNOLOGY

LISTA PEZZI SOFFIANTI
BLOWER PART LIST

17/01/2014

K07-TD MOR





LISTA PEZZI SOFFIANTI
BLOWER PART LIST

17/01/2014

K07-TD MOR

CODICE Code	Descrizione Description	Quantità Quantity GR.132	MATERIALE Type/Material
4054+ABZW	MOTORE ELETTRICO ELECTRIC MOTOR	X	5.5KW 400/690-50 VHZ
4054+ADM6		X	7.5KW 400/690-50 VHZ
4054+ADJO		X	9.2KW 400/690-50 VHZ
4054+ADJO		X	11KW 400/690-50 VHZ
0107K0700100	COPERCHIO CUSCINETTO BEARING COVER	1	
0110K0700102	PIEDE FE P01 ZINCATO SINISTRO FOOT FE P01 ZINC. LEFT	1	
0110K0701102	PIEDE FE P01 ZINCATO DESTRO FOOT FE P01 ZINC. RIGHT	1	
631580100050	RONDELLA BLOCCAGGIO GIRANTE ZINCATA WASHER TO BLOCK ZINC.	1	
0101K0701001	CORPO K07 MS/TS/TD HOUSING K07 MS/TS/TD	1	AL AC-45000SF
0102K0701001	COPERCHIO K07 MS/TS/TD COVER K07 MS/TS/TD	1	AL AC-45000SF
0103K0700001	CORPO INTERMEDIO K07 INTERMEDIATE HOUSING K07	1	AL AC-45000SF
0103K0751001	COPERCHIO INTERMEDIO K07 INTERMEDIATE COVER K07	1	AL AC-45000SF
0104K0701001	GIRANTE K07 TS/TD - K75 MS IMPELLER K07 TS/TD - K75 MS	2	AC AL-45000SF
630540300055	DISTANZIALE GIRANTI K07-K08 SPACER K07-K08	1	
0113K0710004	FLANGIA CIECA PRESSOFUSA 3" BLIND FLANGE PRESSOFUSA 3"	2	
0113K0750101	FLANGIA CIECA LAMIERA ZINCATA BLIND FLANGE LAMIERA ZINC.	2	
1015K0715004	FUSTO SILENZIATORE 3" CON FORO G 1/8" PRESSOFUSO SILENCER 3" WITH FORO G 1/8" PRESSOFUSO	2	
102070200004	FLANGIA GAS 3" FLANGE GAS 3"	2	
1035K0750001	COLLETTORE 90° DN75 X CK8 MANIFOLD 90° DN75 X CK8	1	
1040K0700700	PANNO FONOASSORBENTE 3" SOUND INSULATING PANEL 3"	2	
1045K0700101	RETINO SOSTEGNO SUPPORTING SCREEN	2	
633018100050	TAPPO MASCHIO G 1/8" CON O-RING PLUG G 1/8" WITH O-RING	2	
650206208000	CUSCINETTO 6208 Z BEARING 6208 Z	1	
750250657855	ANELLO TENUTA MIM VITON 50 X 65 X 8 AS SEAL RING MIM VITON 50 X 65 X 8 AS	3	
750404362851	ANELLO OR 4362 O-RING 4362	2	
750404437851	ANELLO OR 4437 O-RING 4437	2	
7505K0700880	GUARNIZIONE PIANA BETAFLEX 72 GASKET BETAFLEX 72	3	



LISTA PEZZI SOFFIANTI
BLOWER PART LIST

17/01/2014

K07-TD MOR

CODICE Code	Descrizione Description	Quantità Quantity GR.132	MATERIALE Type/Material
602212055050	CHIAVETTA C40 12 X 8 X 55 KEY C40 12 X 8 X 55	2	
750750100876	ANELLO FELTRO FELT RING	3	
600212035081	VITE TE M12 X 35 UNI 5739 ACC. CL 8.8 ZN SCREW TE M12 X 35 UNI 5739 ACC. CL 8.8 ZN	1	CL.8.8 ACC.ALTA RESISTENZA
600412000066	RONDELLA ZIGRINATA SCHNORR S12 C60 ZINC. DIN 9250 WASHER SCHNORR S12 C60 ZINC. DIN 9250	1	CL.8.8 ACC.ALTA RESISTENZA
600108030081	VITE TCEI M8 X 30 UNI 5931 ACC. CL 8.8 ZN SCREW TCEI M8 X 30 UNI 5931 ACC. CL 8.8 ZN	4	CL.8.8 ACC.ALTA RESISTENZA
600408000066	RONDELLA ZIGRINATA SCHNORR S8 C60 ZINC. DIN 9250 WASHER SCHNORR S8 C60 ZINC. DIN 9250	37	CL.8.8 ACC.ALTA RESISTENZA
600108025081	VITE TCEI M8 X 25 UNI 5931 ACC. CL 8.8 ZN SCREW TCEI M8 X 25 UNI 5931 ACC. CL 8.8 ZN	26	CL.8.8 ACC.ALTA RESISTENZA
600108080081	VITE TCEI M8 X 80 UNI 5931 ACC. CL 8.8 ZN SCREW TCEI M8 X 80 UNI 5931 ACC. CL 8.8 ZN	8	
601301100075	ROSETTA PIANA 6.4X12.5X1.6 UNI 6592 ISO 7089 WASHER 6.4X12.5X1.6 UNI 6592 ISO 7089	8	140HV ACC.MEDIA RESISTENZA
600208025081	VITE TE M8 X 25 UNI 5739 ACC. CL 8.8 ZN SCREW TE M8 X 25 UNI 5739 ACC. CL 8.8 ZN	4	CL.8.8 ACC.ALTA RESISTENZA
600106025081	VITE TCEI M6 X 25 UNI 5931 ACC. CL 8.8 ZN SCREW TCEI M6 X 25 UNI 5931 ACC. CL 8.8 ZN	8	CL.8.8 ACC.ALTA RESISTENZA
600406000066	RONDELLA ZIGRINATA SCHNORR S6 C60 ZINC. DIN 9250 WASHER SCHNORR S6 C60 ZINC. DIN 9250	8	CL.8.8 ACC.ALTA RESISTENZA
601308100075	ROSETTA PIANA 8.4X17X1.6 UNI 6592 ISO 7089 WASHER 8.4X17X1.6 UNI 6592 ISO 7089	16	140HV ACC.MEDIA RESISTENZA
602608020083	VITE TSEI M8 X 20 CL. 10.9 UNI 5933 DIN 7991 SCREW TSEI M8 X 20 CL. 10.9 UNI 5933 DIN 7991	8	
600108020081	VITE TCEI M8 X 20 UNI 5931 ACC. CL 8.8 ZN SCREW TCEI M8 X 20 UNI 5931 ACC. CL 8.8 ZN	3	CL.8.8 ACC.ALTA RESISTENZA
601310100075	ROSETTA ELASTICA 10.5X17.5X2.2 UNI 1751 DIN127-B ELASTIC WASHER 10.5X17.5X2.2 UNI 1751 DIN127-B	4	A2-70 ACC.INOX
604440501079	RONDELLA DI AGGIUSTAGGIO SEEGER PS 40X50X0.1 SHIM WASHER SEEGER PS 40X50X0.1	1	ACC. ST2 K 60
600110030081	VITE TCEI M10 X 30 UNI 5931 ACC. CL 8.8 ZN SCREW TCEI M10 X 30 UNI 5931 ACC. CL 8.8 ZN	4	CL.8.8 ACC.ALTA RES.
600310200090	DADO ESAGONALE M10 UNI 5588 - ISO 4032 HEXAGONAL NUT M10 UNI 5588 - ISO 4032	4	CL.10 ACC.ALTA RESISTENZA
600108045081	VITE TCEI M8 X 45 UNI 5931 ACC. CL 8.8 ZN SCREW TCEI M8 X 45 UNI 5931 ACC. CL 8.8 ZN	8	CL.8.8 ACC.ALTA RES.