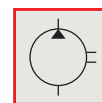
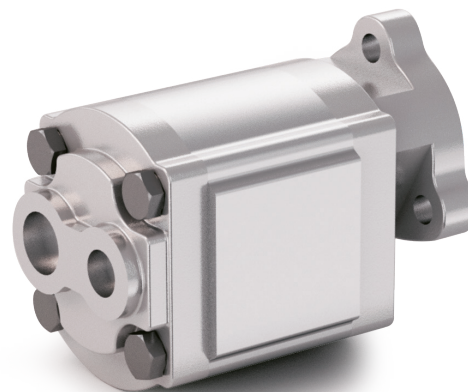
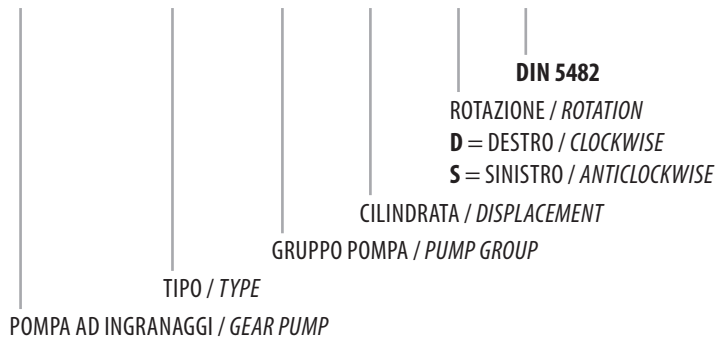


## DIN 5482

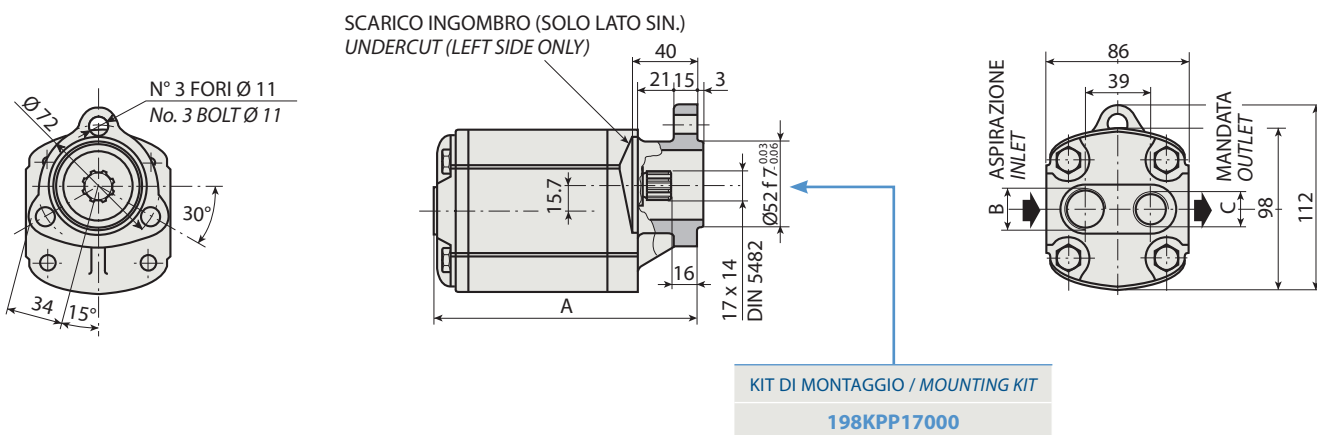
CODICE DI ORDINAZIONE / ORDERING CODE

# 200 DAB 2 XX X 0



<b>DAB 10</b>	<b>DAB 25</b>
<b>DAB 15</b>	<b>DAB 36</b>

1



### CARATTERISTICHE E DATI TECNICI / SPECIFICATIONS AND TECHNICAL DATA

TIPO TYPE	CODICE / CODE		CILINDRATA DISPLACEMENT cm <sup>3</sup> /rev.	A mm	B ASPIRAZIONE INLET	C MANDATA OUTLET	PESO WEIGHT kg
	ROTAZIONE DESTRA CLOCKWISE ROT.	ROTAZIONE SINISTRA ANTICLOCKWISE ROT.					
<b>DAB 10</b>	<b>200DAB210D0</b>	<b>200DAB210S0</b>	10	139	3/4" G	1/2" G	2.7
<b>DAB 15</b>	<b>200DAB215D0</b>	<b>200DAB215S0</b>	15	148	3/4" G	1/2" G	3.0
<b>DAB 25</b>	<b>200DAB225D0</b>	<b>200DAB225S0</b>	25	164.5	3/4" G	1/2" G	3.2
<b>DAB 36</b>	<b>200DAB236D0</b>	<b>200DAB236S0</b>	35	181.5	3/4" G	1/2" G	3.7

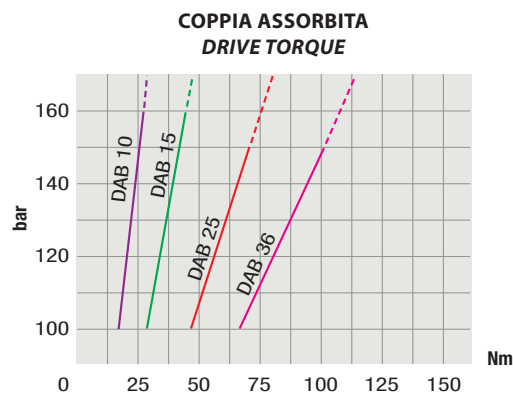
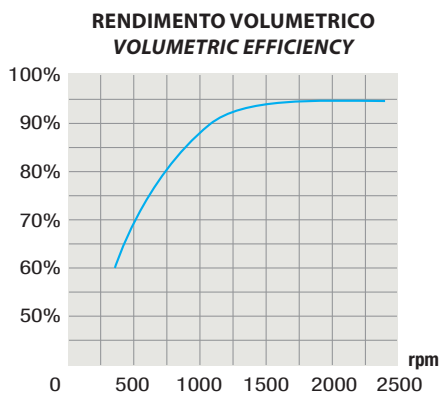
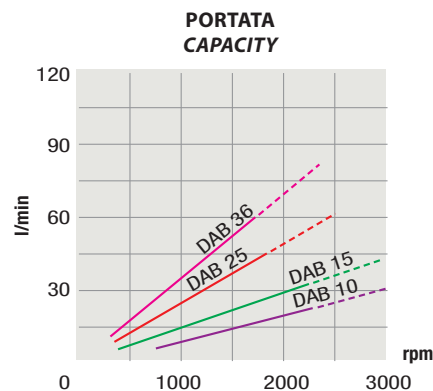
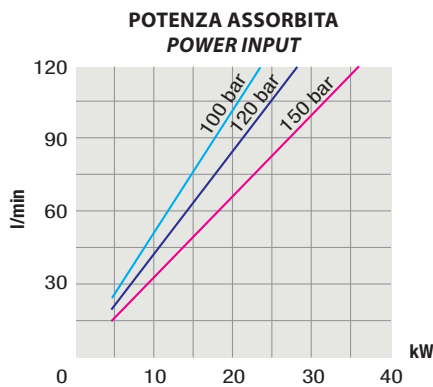
KIT RASAMENTI / THRUST PLATES KIT CODICE / CODE 20602300000

KIT GUARNIZIONI COMPLETO / COMPLETE SEALS KIT CODICE / CODE 21902500000

Per la scelta dei raccordi orientabili vedi pag. 212-213 / For the selection of adjustable fittings see page 212-213

- A richiesta possono essere fornite le pompe ad ingranaggi con le guarnizioni HNBR per climi freddi (-40 °C).
- On request our gear pumps may be supplied with HNBR seals for cold climates (-40 °C).

TIPO / TYPE			DAB 10	DAB 15	DAB 25	DAB 36	
Cilindrata <i>Displacement</i>	Vg	cm <sup>3</sup> /n cm <sup>3</sup> /rev.	10	15	25	35	
Pressione massima continua <i>Max continuous operating pressure</i>	P1	bar	180	140	120	100	
Pressione massima intermittente <i>Max intermittent operating pressure</i>	P2		(max 30 s)	200	160	150	120
Pressione massima di picco <i>Max peak pressure</i>	P3		(≤ 0.1 s)	270	210	180	150
Velocità massima intermittente <i>Max intermittent speed</i>	(P ≤ 20 bar)	n3	3000	3000	2500	2100	
Velocità massima continua <i>Max continuous speed</i>	(≤ P1)	n1	n/min r.p.m.	1500	1500	1500	1400
Velocità minima intermittente <i>Min intermittent speed</i>	(≤ P2 x 0.5) (max 30 s)	n4	800	650	650	600	

**DIAGRAMMI / DIAGRAMS**


RILIEVI ESEGUITI CON OLIO ISO VG 46 A 50° C ( $\nu = 30$  cSt)  
 THE ABOVE SPECIFICATIONS REFER TO OIL TYPE ISO VG 46 AT 50° C ( $\nu = 30$  cSt)