

AD1 Series / Inductive Proximity Switches

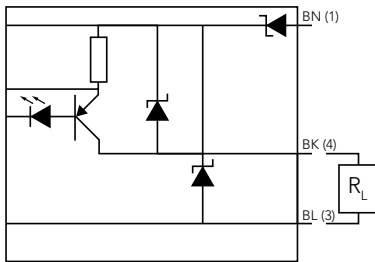
Switching Sensors



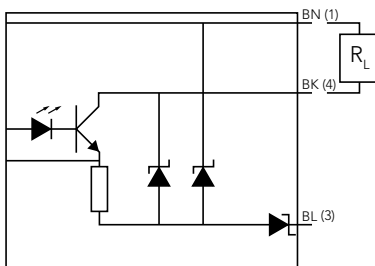
- Construction type: M5x1
- Switching distance: 0.8 mm / 1.5 mm
- Connection type: Cable and M8 connector
- Housing material: Stainless steel AISI 303
- IP67 Ingress protection
- Power supply: 10 - 30 V DC

Electrical diagram

PNP



NPN



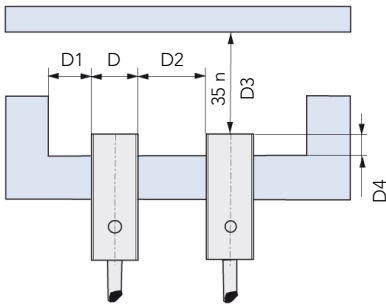
	AD1/xx-xA	AD1/xx-xF
GENERAL DATA		
Series	AD1	
Measurement method	Induction	
Sensorfunction	Switch	
Construction type	M5x1	
Connection type	Cable, 3-core	M8 connector, 3-pin
Display elements	LED - output status	
MEASUREMENT DATA		
Repeat accuracy	5 %	
Temperature drift	≤ 10 %	
OUTPUTS		
Output current	≤ 100 mA	
Time delay before availability	≤ 50 ms	
Switching hysteresis	1 - 20 %	
Switching frequency	7000 Hz	
POWER SUPPLY		
Power supply	10 - 30 V DC	
No-load current	≤ 10 mA	
Short circuit protection	Yes	
Reverse polarity protection	Yes	
Induction protection	Yes	
Ripple max.	≤ 10 %	
Voltage drop	≤ 1.5 V @ 100 mA	
Leakage current	≤ 10 µA	
PHYSICAL CHARACTERISTICS		
Housing material	Stainless steel	
Ingress protection	IP67	
Dimensions (ø x L)	5 x 30.2 mm	8 x 38.5 mm
Cable length	2000 mm	-
Weight	30 g	4 g
Type of installation	Shielded	
Sensing face	PBT (polybutylene terephthalate)	
ENVIRONMENTAL		
Operating temperature range	-25 - +70 °C	
APPROVALS		
EMC	EN 60947-5-2,7	

AD1 Series / Inductive Proximity Switches

Versions

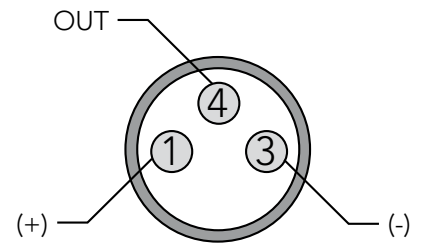
CONSTRUCTION TYPE	SWITCHING DISTANCE	CONNECTION TYPE	DIGITAL PNP NO	DIGITAL NPN NO	DIGITAL PNP NC	DIGITAL NPN NC
AD1 SERIES						
M5x1	0.8 mm	Cable	AD1/AP-1A	AD1/AN-1A	AD1/CP-1A	AD1/CN-1A
		M8 connector	AD1/AP-1F	AD1/AN-1F	AD1/CP-1F	AD1/CN-1F
	1.5 mm	Cable	AD1/AP-3A	AD1/AN-3A	AD1/CP-3A	AD1/CN-3A
		M8 connector	AD1/AP-3F	AD1/AN-3F	AD1/CP-3F	AD1/CN-3F

Mount



Connector

M8 connector



Dimensions

