

## 983v2 Static Locator



**Product Code:** 983v2

The Model 983v2 Static Locator provides accurate measurement of electrostatic charges. Its design enables fast response, low drift and ease of operation.

The 983v2 can operate in "Continuous" or "Peak Hold" mode to record changes in the level of charge or the highest charge detected respectively. It is suitable for use by production, maintenance, inspection and quality engineers and on any material where static charge may be an issue.

### Features

### Benefits

Compact design	Lightweight, pocket sized device
Large high contrast LCD screen with digital display	Easy to read in different lighting conditions
Continuous and Peak Hold modes	Can measure fluctuation in charge levels and/or the highest level detected
In-built distance meter	Clear indication of correct operating range for consistent, accurate readings
Robust plastic housing	High durability
Instrument case	Safe, clean storage when not in use

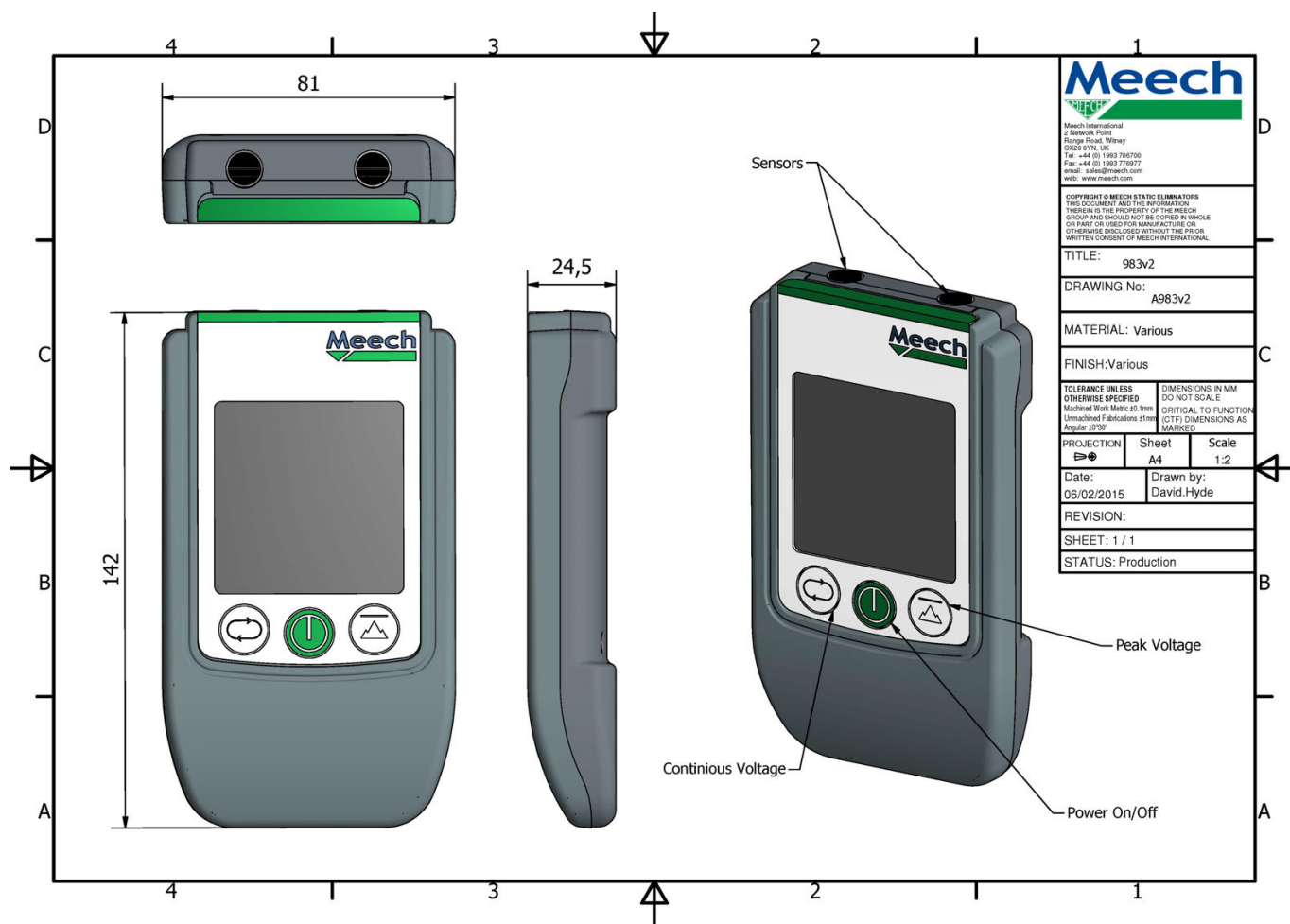
### Technical Characteristics

Dimensions	145mm x 80mm x 25mm (H x W x D)
Weight	200g
Construction	Moulded plastic case, integral battery compartment, external earth connection
Measurement range	-200kV to 200kV at a distance of 150mm
Accuracy	+/-5%
Battery	2 x AA alkaline
Battery life	Approximately 10 hours of continuous use

Product shown in this document may be covered by one or more patents, patents applied for and/or registered designs and/or trade marks. For further information please refer to our Head Office or visit [www.meech.com](http://www.meech.com).

# Product Data Sheet

Published Date: 09.02.2015



<small>Meech International 2 Network Point Range Road, Winny O228 9YN, UK Tel: +44 (0) 1993 706700 Fax: +44 (0) 1993 719777 email: sales@meech.com web: www.meech.com</small>		
<small>COPYRIGHT © MEECH STATIC ELIMINATORS THIS DOCUMENT AND THE INFORMATION THEREIN IS THE PROPERTY OF THE MEECH GROUP AND SHOULD NOT BE COPIED IN WHOLE OR PART OR USED FOR MANUFACTURE OR OTHERWISE DISCLOSED WITHOUT THE PRIOR WRITTEN CONSENT OF MEECH INTERNATIONAL.</small>		
TITLE:	983v2	
DRAWING No:	A983v2	
MATERIAL:	Various	
FINISH:	Various	
<small>TOLERANCE UNLESS OTHERWISE SPECIFIED Machine Work Metric 0.1mm Unmachined Fabrications 1mm Angular ±30°</small>		
<small>DIMENSIONS IN MM DO NOT SCALE CRITICAL TO FUNCTION MARKED</small>		
PROJECTION	Sheet	Scale
	A4	1:2
Date:	Drawn by:	
06/02/2015	David.Hyde	
REVISION:		
SHEET: 1 / 1		
STATUS: Production		

Product shown in this document may be covered by one or more patents, patents applied for and/or registered designs and/or trade marks. For further information please refer to our Head Office or visit [www.meech.com](http://www.meech.com).

Meech International

UK: +44 1993 706 700  
Hungary: +36 1 7977039

US: +1 330 564 2000  
China: +86 400 820 0102

Belgium: +32 (0)80 670 204  
India: +91 20-26159641

email: [sales@meech.com](mailto:sales@meech.com)  
web: [www.meech.com](http://www.meech.com)

