

915 Anti-Static Bar



Product Code: 915

The Meech Model 915 AC Anti-Static Bar has been designed to meet the most arduous of static elimination problems, including those encountered in high speed web applications.

The powerful performance of the Model 915 provides very fast decay times and effective ionisation up to distances of 150mm. The Model 915 bar is shockless and is easily maintained. It is powered by the Model 904.

Features

Benefits

Powerful, intense ion production	Very fast decay times and effective at faster web speeds
Extended range performance	Flexibility in positioning
Slim profile	Can be installed in restricted spaces
Resistively coupled emitter pins	Shockless, thereby enhancing operator safety
Sharp titanium emitter pins	Reduced pin contamination & longer effective life
Easy wipe casing	Easy maintenance, sustained performance and reduced machine downtimes
"T" channel mounting system	Simple & quick installation
CUL and CE approved	Full conformance to international standards (UL, CSA & CE)

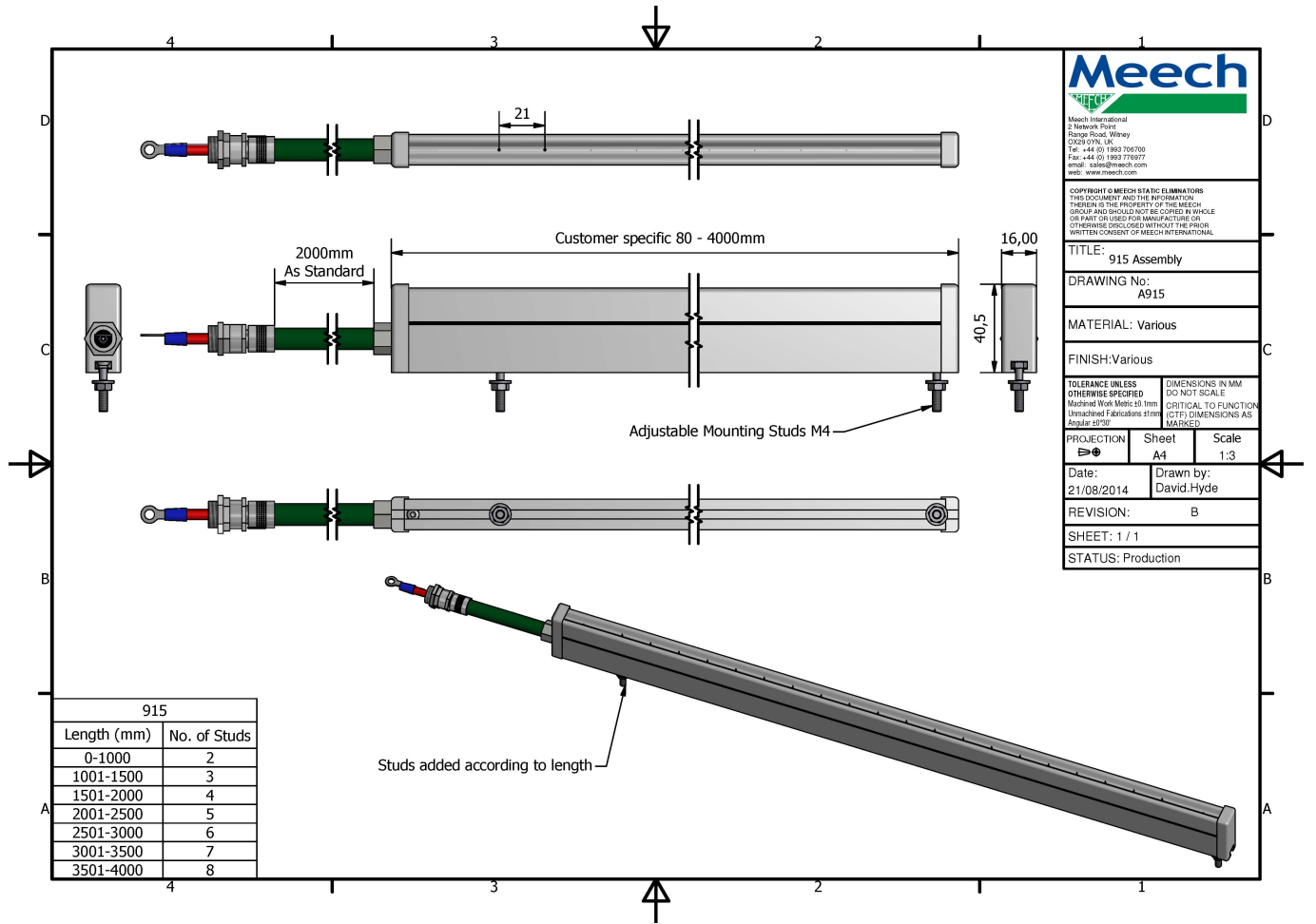
Technical Characteristics

Dimensions	18mm x 42mm x length (up to 4000mm)
Weight	Approx 1,100gms per 1000mm length
Operating voltage	4.5-7.0kV
Cable	2 metres shielded in flexible conduit; longer lengths can be ordered
Construction	Anodised aluminium and fire retardant PVC extrusion
Emitters	Titanium
Mounting	Two M4 x 20mm studs into "T" slots
Operating current	Less than 5 mA
Maximum operating temperature	60°C
Typical Operating Range	30 - 150mm
Certifications	CE, UL.

Product shown in this document may be covered by one or more patents, patents applied for and/or registered designs and/or trade marks. For further information please refer to our Head Office or visit www.meech.com.

Product Data Sheet

Published Date: 13.05.2016



Meech
Meech International
 2 Network Point
 Range Road, Wilsey
 OX28 9YH, UK
 Tel: +44 (0) 1893 706700
 Fax: +44 (0) 1893 776977
 email: sales@meech.com
 web: www.meech.com

COPYRIGHT © MEECH STATIC ELIMINATORS
 THIS DOCUMENT AND THE INFORMATION
 THEREIN IS THE PROPERTY OF THE MEECH
 GROUP AND SHOULD NOT BE COPIED IN WHOLE
 OR PART OR USED FOR MANUFACTURE OR
 OTHERWISE DISCLOSED WITHOUT THE PRIOR
 WRITTEN CONSENT OF MEECH INTERNATIONAL

TITLE: 915 Assembly
DRAWING No: A915
MATERIAL: Various
FINISH: Various

TOLERANCE UNLESS OTHERWISE SPECIFIED
 Mechanical Work Metric: ±0.1mm
 Unmachined Fabrications ±1mm
 Angular ±1°30' DIMENSIONS IN MM
 DO NOT SCALE
 CRITICAL TO FUNCTION
 (CTF) DIMENSIONS AS
 MARKED

PROJECTION: Sheet **Scale:** 1:3
 Date: 21/08/2014 Drawn by: David.Hyde
REVISION: B
SHEET: 1 / 1
STATUS: Production

Product shown in this document may be covered by one or more patents, patents applied for and/or registered designs and/or trade marks. For further information please refer to our Head Office or visit www.meech.com.

Meech International

UK: +44 1993 706 700
 Hungary: +36 1 7977039

US: +1 330 564 2000
 China: +86 400 820 0102

Belgium: +32 (0)80 670 204
 India: +91 20-26159641

email: sales@meech.com
 web: www.meech.com

