



A Regal Brand

Catalog # : 121518.00
Product Type: AC MOTOR
Description:

Model: 121518.00
Stock: Y

Quote: Price:

Date: 11/06/2019



A Regal Brand

Catalog # : 121518.00
Product Type: AC MOTOR
Description:

Model: 121518.00
Stock: Y

Engineering Data

Volts	230	Volts	460	Volts	190/380
F.L. Amps	4	F.L. Amps	2	F.L. Amps	4.8/2.4
S. F Amps	5	S. F Amps	2.5	S. F Amps	5.6/2.8

RPM	3600	Hertz	60/50	TYPE	TF
HP	1 1/2	Duty	CONTINUOUS	Phase	3
KW	1.12	Serv. Factor	1.25	Code	M
Frame	143T	Design	B	Therm.Prot.	9700K46
Max Amb	40	Protection	NOT	PF	82
Insul Class	F	Eff 75%		Bearing OPE	6203
Eff 100%	84	CSA	Yes	Bearing PE	6205
UL	Y-(LEESON UL REC)	CE	Yes	Speed Range	NONE
CC Number	NONE	Inverter Type			

Motor Wt.	40 LB	Enclosure	TEFC	Lubrication	POLYREX EM
Nameplate	993500	Mounting	RIGID	Rotation	REV
Assembly	NONE	Shaft Dia.	7/8 IN	Ext. Diag.	005010.20
Cust Part No		Outline	028765-700	Ext. Diag2	
Packaging	B	Outline Dash No		Winding	T632173
Carton Label	Leeson Wattsaver			GROUP :	3
Iris		Paint	GREEN (ENAMEL)	Test Card	01

Form Factor		RMS Amps		Const Torque	Speed Range
Torque		Peak			
AB Code		Peak@DegC			
Resistance					
Connection					

Rework Status Rework TYPE

Hazardous Loc
Explosion Proof
Class
Class

NONE

Temp Op Code
GROUP
GROUP

Brake Motors
FORCE
VDC
ADC

Brake Coil OHMs @25 C

Performance							
Torque UOM		LB-FT		Inertia (WK ²)		.06 LB-FT ²	
Torque		2.25(Full Load)		11.2(Break Down)		8.5(Pull Up)	8.5(Locked Rotor)
CURRENT (amps)		2(Full Load)		0(Break Down)		0(Pull Up)	21(Locked Rotor)
Efficiency (%)		0(Full Load)		82.2(75% Load)		79.1(50% Load)	67.8(25% Load)
PowerFactor		(Full Load)		76.3(75% Load)		64.7(50% Load)	46.2(25% Load)

Load Curve Data @60/50 HzVolts,1 1/2Horsepower

Load	Amps	KW	RPM	Torque	Eff	PF	Rise By Resis	Frame Rise
0.0	1.0	0.1	3599	0.0	0.0	12.6	0.0	-
0.25	1.14	0.42	3578	0.56	67.8	46.2	0.0	-
0.5	1.39	0.716	3559	1.12	79.1	64.7	0.0	-
0.75	1.69	1.028	3540	1.68	82.2	76.3	0.0	-
1.0	2.03	1.33	3521	2.25	84.6	82.2	46.0	-
1.25	2.44	1.644	3501	2.8	84.7	84.6	0.0	-
1.5	2.87	1.984	3478	3.38	84.2	86.8	0.0	-

SOURCE: CALCULATED GROUP: 3

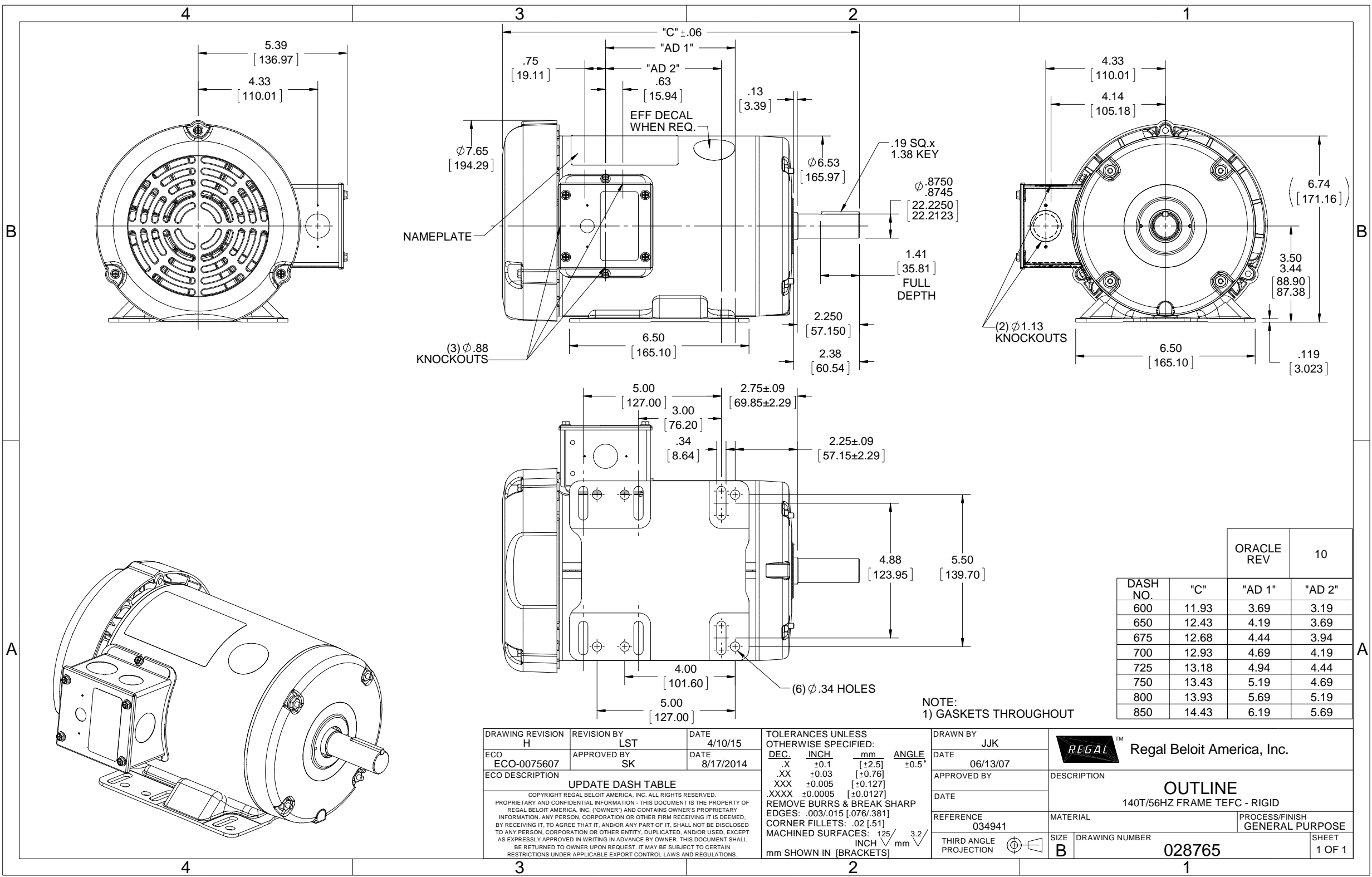
Load Curve Data @60/50HzVolts,1 1/2Horsepower

Load	Amps	KW	RPM	Torque	Eff	PF	Rise By Resis	Frame Rise
------	------	----	-----	--------	-----	----	---------------	------------

Load Curve Data Not Available

Quote: Price:

Date: 11/06/2019

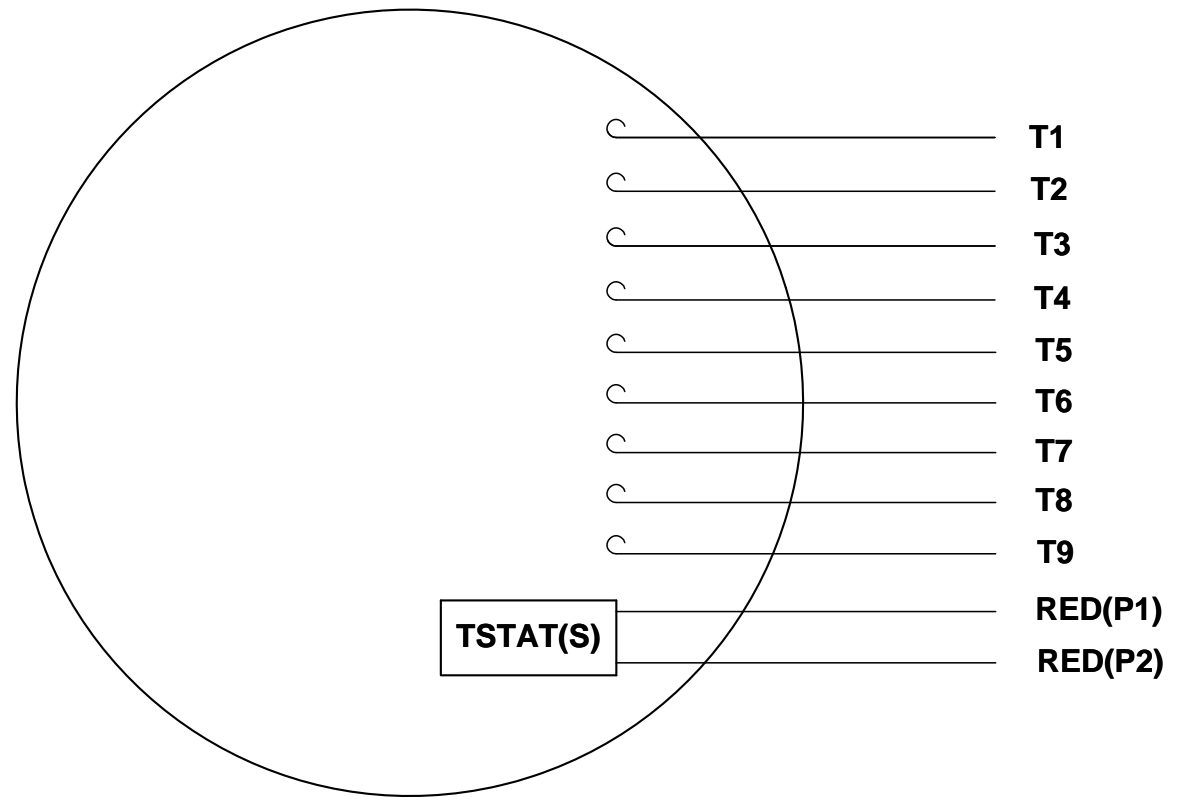


DASH NO.	"C"	"AD 1"	"AD 2"
600	11.93	3.69	3.19
650	12.43	4.19	3.69
675	12.68	4.44	3.94
700	12.93	4.69	4.19
725	13.18	4.94	4.44
750	13.43	5.19	4.69
800	13.93	5.69	5.19
850	14.43	6.19	5.69

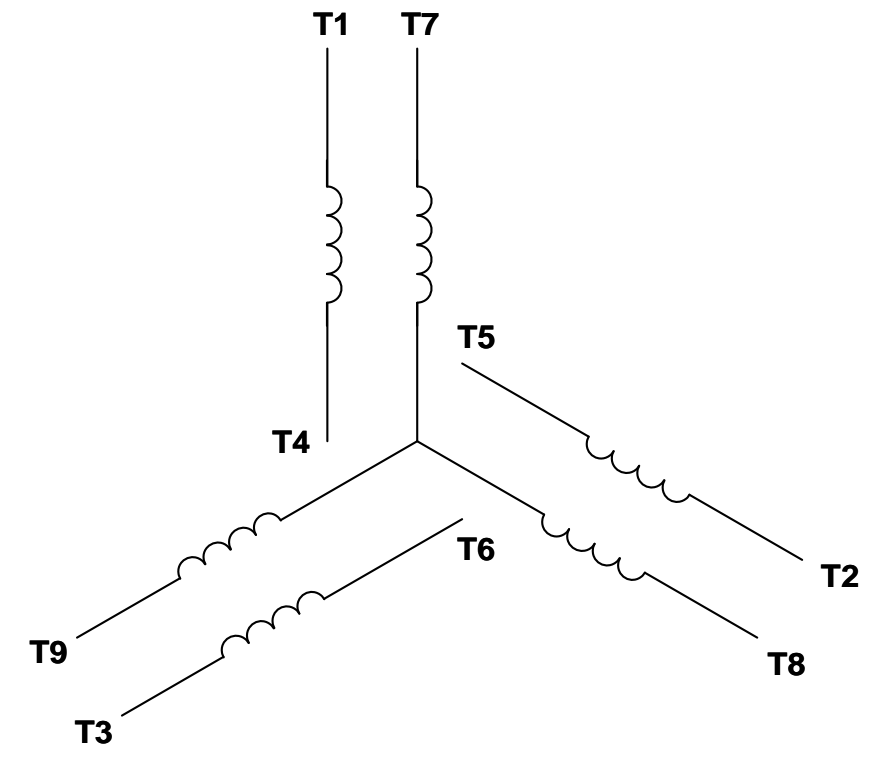
NOTE:
1) GASKETS THROUGHOUT

DRAWING REVISION H	REVISION BY LST	DATE 4/10/15	TOLERANCES UNLESS OTHERWISE SPECIFIED: DEC. INCH mm ANGLE .X ±0.1 [±2.5] ±0.5° .XX ±0.03 [±0.76] .XXX ±0.005 [±0.127] .XXXX ±0.0005 [±0.0127]	DRAWN BY JJK	REGAL™ Regal Beloit America, Inc.
ECO-0075607	APPROVED BY SK	DATE 8/17/2014	DATE 06/13/07	DATE	
ECO DESCRIPTION UPDATE DASH TABLE			REMOVE BURRS & BREAK SHARP EDGES: .003/.015 [0.076/.381] CORNER FILLETS: .02 [51] MACHINED SURFACES: 125/3.2 mm INCH mm	APPROVED BY	DESCRIPTION OUTLINE 140T/56HZ FRAME TEFC - RIGID
COPYRIGHT REGAL BELOIT AMERICA, INC. ALL RIGHTS RESERVED. PROPRIETARY AND CONFIDENTIAL INFORMATION - THIS DOCUMENT IS THE PROPERTY OF REGAL BELOIT AMERICA, INC. ("OWNER") AND CONTAINS OWNER'S PROPRIETARY INFORMATION. ANY PERSON, CORPORATION OR OTHER FIRM RECEIVING IT IS DEEMED, BY RECEIVING IT, TO AGREE THAT IT, AND/OR ANY PART OF IT, SHALL NOT BE DISCLOSED TO ANY PERSON, CORPORATION OR OTHER ENTITY, DUPLICATED, AND/OR USED, EXCEPT AS EXPRESSLY APPROVED IN WRITING IN ADVANCE BY OWNER. THIS DOCUMENT SHALL BE RETURNED TO OWNER UPON REQUEST. IT MAY BE SUBJECT TO CERTAIN RESTRICTIONS UNDER APPLICABLE EXPORT CONTROL LAWS AND REGULATIONS.			REFERENCE 034941	MATERIAL	PROCESS/FINISH GENERAL PURPOSE
			THIRD ANGLE PROJECTION	SIZE B	DRAWING NUMBER 028765
					SHEET 1 OF 1

VIEW FROM OUTSIDE OF MOTOR AT SWITCH END. Uncontrolled Copy



LINE LEADS



VOLTAGE	L1	L2	L3	JOIN & INSULATE
HIGH	T1	T2	T3	(T4,T7) (T5,T8) (T6,T9)
LOW	T1,T7	T2,T8	T3,T9	T4,T5,T6

DRAWING REVISION **G** REVISION BY **MVG** DATE **04/05/2017**

ECO **ECO-0121253** APPROVED BY **SM** DATE **04/05/2017**

ECO DESCRIPTION
ADDED P1 & P2 FOR TSTAT

COPYRIGHT REGAL BELOIT AMERICA, INC. ALL RIGHTS RESERVED. PROPRIETARY AND CONFIDENTIAL INFORMATION - THIS DOCUMENT IS THE PROPERTY OF REGAL BELOIT AMERICA, INC. ("OWNER") AND CONTAINS OWNER'S PROPRIETARY INFORMATION. ANY PERSON, CORPORATION OR OTHER FIRM RECEIVING IT IS DEEMED, BY RECEIVING IT, TO AGREE THAT IT, AND/OR ANY PART OF IT, SHALL NOT BE DISCLOSED TO ANY PERSON, CORPORATION OR OTHER ENTITY, DUPLICATED, AND/OR USED, EXCEPT AS EXPRESSLY APPROVED IN WRITING IN ADVANCE BY OWNER. THIS DOCUMENT SHALL BE RETURNED TO OWNER UPON REQUEST. IT MAY BE SUBJECT TO CERTAIN RESTRICTIONS UNDER APPLICABLE EXPORT CONTROL LAWS AND REGULATIONS.

TOLERANCES UNLESS OTHERWISE SPECIFIED:

DEC.	INCH	mm	ANGLE
.X	±0.1	[±2.5]	±0.5°
.XX	±0.01	[±0.25]	
.XXX	±0.005	[±0.127]	
.XXXX	±0.0005	[±0.0127]	

REMOVE BURRS & BREAK SHARP EDGES: .003/.015 [.076/.381] X 45°
 CORNER FILLETS: R.02 [.51]
 MACHINED SURFACES: 125/3.2 INCH/mm

mm SHOWN IN [BRACKETS]

DRAWN BY **DBT 12/16/97**

DATE

APPROVED BY **KH 12/17/97**

DATE

REFERENCE

THIRD ANGLE PROJECTION



DESCRIPTION
CONN DIAGRAM-EXTERNAL
3 PHASE WITH PROTECTOR

MATERIAL **DECAL - 004014 (TSTAT) - 080582** PROCESS/FINISH **STOCK**

SIZE **A** DRAWING NUMBER **00501020** SHEET **1 OF 1**