

Input data

System of measurement		Metric
Input type		Coupling for electric motor
Input speed	[rpm]	1400
Output speed	[rpm]	46.67
Ratio (i=)		30
Frequency	[Hz]	50
Input options		IEC
Requested input power	[kW]	1.1
Service factor		0.9
Thermal power	[kW]	0.9

Output data
Gear unit X C 63 30 H25 90_B14 B6

Type		X - Worm gearboxes
Input type		C
Size		63
Ratio (i=)		30
Input flange		B14
Mounting position		B6
Input speed	[rpm]	1400
Output speed	[rpm]	46.67
Rated output torque	[Nm]	164.33
Service Factor		0.9
Efficiency		0.73

Gear unit configuration

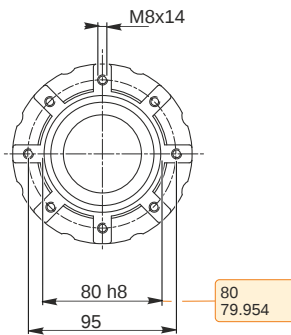
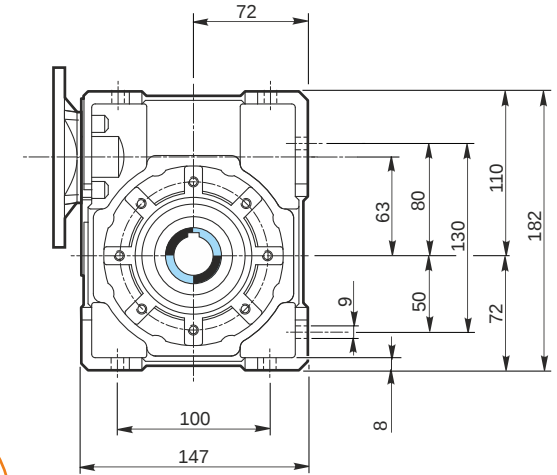
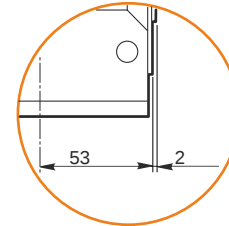
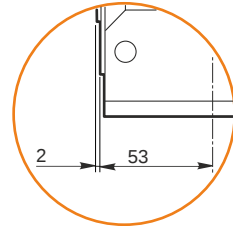
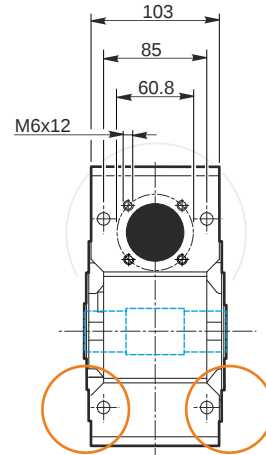
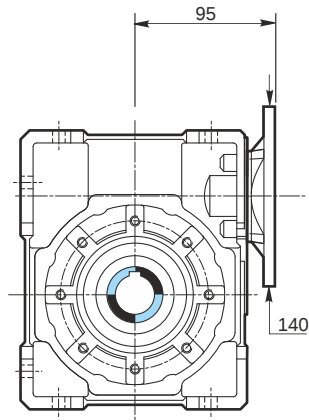
Output shaft		H25
Fixing		Universal

Output radial and axial loads

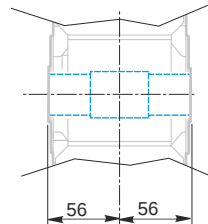
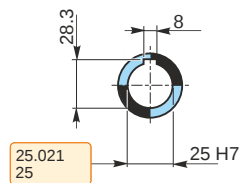
Ball bearings output radial load	[N]	3400
Taper bearings output radial load	[N]	6800
Ball bearings output axial load	[N]	680

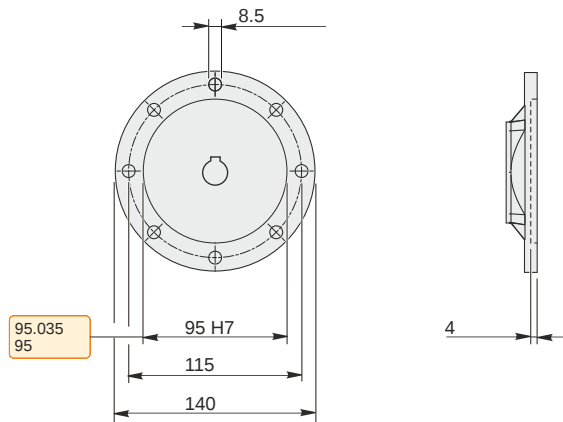
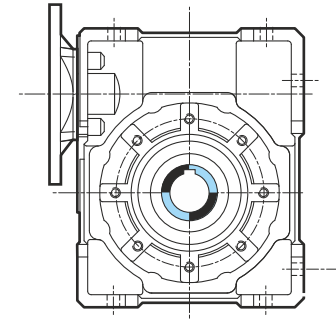
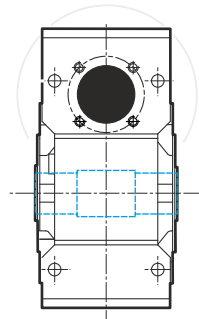
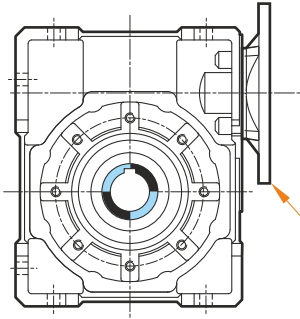
Electric motor coupling

Size		90 S
Poles n.		4
Power	[kW]	1.1



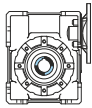
Hollow output shaft



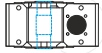


Mounting positions

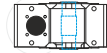
B3



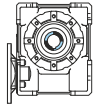
B6



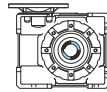
B7



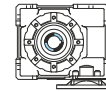
B8



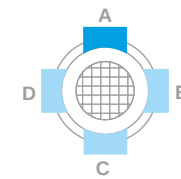
V5



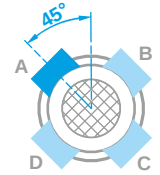
V6



Terminal board position



PM = 1



PM = 2

0.16

0.16

0.16

0.16

0.16

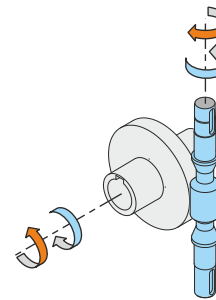
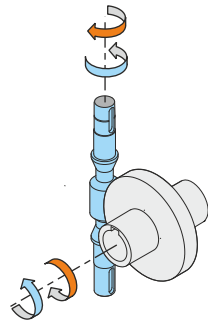
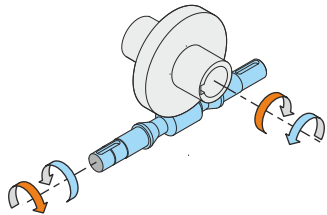
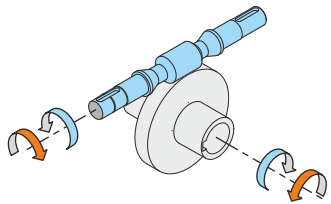
0.16



Oil quantity [litres]

Lubricant type: Long life synthetic oil ISO VG320

Direction of rotation



Weight (approximate values)

Gear unit [kg]

6.6