

ACCESSORIES AVAILABLE
ACCESORIOS DISPONIBLES
ACCESSOIRES DISPONIBLES

BC601	4 oz. Bostitch Air -Tool Lubricant
BC602	1 pint Bostitch Air -Tool Lubricant
BC603	1 pint Bostitch "Winter-Formula" Air-Tool Lubricant
BC604	1 quart Bostitch Air -Tool Lubricant
851385	Loctite Grade 242 (.02 oz.)
N80K2	Remote Control Kit
121072	Softfoot
112630	Dust Shield
112631	Spring Clip for Dust Shield
N89ORK	Kit, O-ring Repair

BOSTITCH®

F21PL-E

PNEUMATIC STICK NAILERS
CLAVADORA NEUMÁTICA ALIMENTADA POR BARRA
CLOUEUR PNEUMATIQUE EN BANDES



TOOL PARTS ILLUSTRATION
ILUSTRACIÓN DE LAS PIEZAS DE LA HERRAMIENTA
ILLUSTRATION DES PIÈCES D'OUTILLAGE

⚠ WARNING:

⚠ ADVERTENCIA:

⚠ ATTENTION:

BEFORE PERFORMING REPAIRS ON THIS TOOL, ALL OPERATORS SHOULD STUDY THIS ILLUSTRATION, AS WELL AS THE PARTS LIST AND OPERATION AND MAINTENANCE MANUAL. OPERATORS SHOULD UNDERSTAND AND FOLLOW ALL SAFETY WARNINGS AND INSTRUCTIONS. KEEP THIS ILLUSTRATION WITH THE TOOL FOR FUTURE REFERENCE. IF YOU HAVE ANY QUESTIONS, CONTACT YOUR BOSTITCH REPRESENTATIVE OR DISTRIBUTOR.

ANTES DE LLEVAR A CABO CUALQUIER REPARACIÓN EN LA HERRAMIENTA, TODOS LOS OPERARIOS DEBERÁN ESTUDIAR ESTA ILUSTRACIÓN, ASÍ COMO LA LISTA DE PIEZAS Y EL MANUAL DE OPERACIÓN Y MANTENIMIENTO. LOS OPERARIOS DEBERÁN ENTENDER Y SEGUIR TODAS LAS ADVERTENCIAS E INSTRUCCIONES DE SEGURIDAD. CONSERVE ESTA ILUSTRACIÓN CON LA HERRAMIENTA PARA PODER CONSULTARLA EN LO FUTURO. SI TUVIERA ALGUNA PREGUNTA, PONGASE EN CONTACTO CON SU REPRESENTANTE O DISTRIBUIDOR DE BOSTITCH.

AVANT DE PROCÉDER À LA RÉPARATION DE CET OUTIL, LES OPÉRATEURS DOIVENT ÉTUDIER LA PRÉSENTE ILLUSTRATION AINSI QUE LA LISTE DE PIÈCES ET LE MANUEL D'INSTRUCTIONS ET D'ENTRETIEN ; ILS DOIVENT ÉGALEMENT COMPRENDRE ET OBSERVER LES CONSIGNES DE SÉCURITÉ ET LES INSTRUCTIONS. CONSERVER CETTE ILLUSTRATION AVEC L'OUTIL POUR RÉFÉRENCE FUTURE. SI VOUS AVEZ DES QUESTIONS, COMMUNIQUEZ AVEC VOTRE REPRÉSENTANT OU VOTRE DISTRIBUTEUR DE BOSTITCH.

IP1227-1REVC 4/07

BOSTITCH®
Stanley Fastening Systems L.P.

F21PL-E

PNEUMATIC STICK NAILERS

CLAVADORA NEUMÁTICA ALIMENTADA POR BARRA CLOUEUR PNEUMATIQUE EN BANDES

See reverse side for available accessories (not included)

95-105 IN LBS.
OF TORQUE.
(109-121 CM-KG)

125-140 IN LBS.
OF TORQUE.
(144-161 CM-KG)
4 PLACES

6-10 IN LBS.
OF TORQUE.
(7-12 CM-KG)
2 PLACES

60-70 IN LBS.
OF TORQUE
(69-81 CM-KG)

60-70 IN LBS.
OF TORQUE.
(69-81 CM-KG)
4 PLACES.

10-15 IN LBS.
OF TORQUE
(12-17 CM-KG)

60-70 IN LBS.
OF TORQUE
(69-81 CM-KG)
2 PLACES.

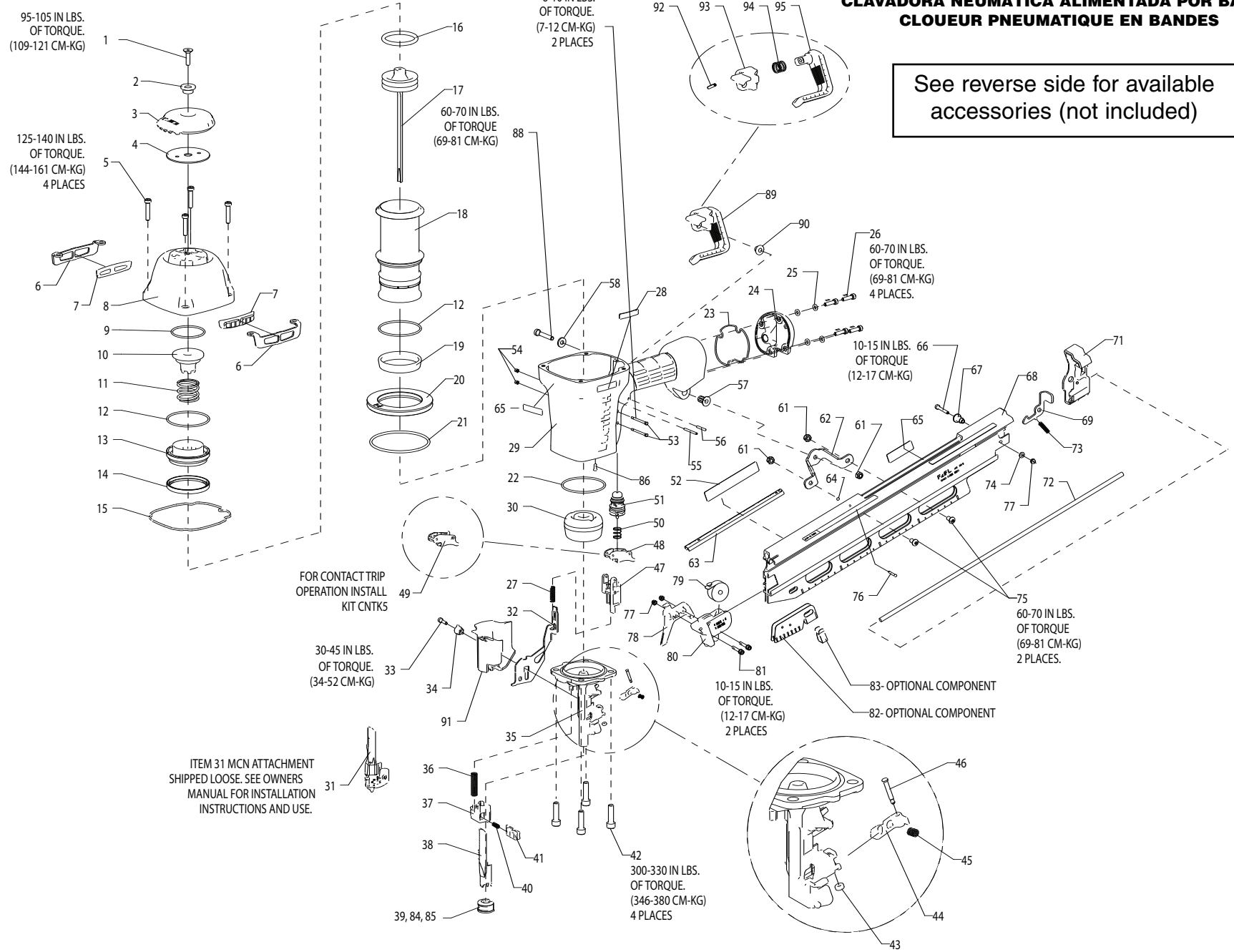
FOR CONTACT TRIP
OPERATION INSTALL
KIT CNTKS

30-45 IN LBS.
OF TORQUE.
(34-52 CM-KG)

10-15 IN LBS.
OF TORQUE.
(12-17 CM-KG)
2 PLACES

300-330 IN LBS.
OF TORQUE.
(346-380 CM-KG)
4 PLACES

ITEM 31 MCN ATTACHMENT
SHIPPED LOOSE. SEE OWNERS
MANUAL FOR INSTALLATION
INSTRUCTIONS AND USE.



BOSTITCH

F21PL-E		Parts List:		IP1227-2REVG	
To be Used with tool parts illustration:					
and operation and maintenance manual:					
Serial Number on the Tool:				F21PL-E 7170 000 and Higher	
ITEM	PART #	DESCRIPTION	ITEM	PART #	DESCRIPTION
1	MSF6100-25	SCREW,SFHCS,M6X1.00X25	54	MHE3050-100	NUT,NYLON M3X.50
2	163859	BUSHING,EXHAUST DEFLECTOR	55	100298	PIN,SPIRAL M3X30
3	163818	DEFLECTOR,EXHAUST	56	MPP030020	PIN,SPIRAL M3X20MM
4	163830	PLATE,CAP	57	123859	BUSHING,FLANGED ISOLATION
5	MSC6100-30	SCREW,SHCS,M6X1.00X30	58	MPW6.2	WASHER,SPECIAL
6	163827	PLATE,WEAR	61	MHE6100-100	NUT,ESN M6X1
7	149819	WEAR GUIDE	62	163860	BRACKET
8	163848	FRAME CAP,MACHINING	63	121406	LINER,NAIL GUIDE
9	105814	O-RING,1.929X.098	64	166797	O-RING,.056X.060 NBR
10	163820	BUMPER,HEAD VALVE	65	171348	LABEL,FASTENER,F21PL-E
11	163844	SPRING,HEAD VALVE	66	100261	SCREW,SHCS,M4X30
12	163822	O-RING,2.487X.103XNBR	67	121472	SPACER,PUSHER LATCH
13	163821	LOWER BODY,HEAD VALVE	68	166782	MAGAZINE,PAD PRINT,F21PL
14	163823	SEAL,HEAD VALVE	69	166778	LATCH,PUSHER
15	163845	SEAL,FRAME/CAP	71	163912	ASSEMBLY,END CAP
16	851606	O-RING,1.850X.210	72	163867	ROD,GUIDE
17	163921	ASSEMBLY,PISTON/DRIVER	73	120878	SPRING, PUSHER LATCH
18	163824	SLEEVE,CYLINDER	74	MPW4	WASHER,PWN,M4
19	175520	SEAL,CHECK	75	MSB6100-12	SCREW,SBHCS,M6X1.00X12
20	163855	RING,CYLINDER SLEEVE	76	121407	PIN,SPECIAL
21	108718	O-RING,3.484X.139	77	MHE4070-100	ELASTIC STOP NUT,M4
22	89673	O-RING,2.550X.103	78	163901	PUSHER
23	163856	SEAL,END CAP	79	115143	SPRING,CONSTANT FORCE
24	163843	END CAP,PAINT	80	163902	HANDLE,PUSHER
25	T50118	WASHER,PLAIN	81	121052	SCREW,SHCS,M4X0.70X25
26	MSC5080-20	SCREW,SOC HD. CAP M5 X 20	82	112630	SHIELD,DUST
27	166781	SPRING,UPPER TRIP	83	112631	SPRING,CLIP
28	171432	LABEL,MAGNESIUM	84	121071	CLIP,TRIP FOOT
29	171127	FRAME,OVERMOLD	85	121070	FOOT,TRIP
30	107231	BUMPER,DRIVE	86	163858	PLUG,EXHAUST
31	MCN-KIT2	KIT,METAL CONNECTOR ATTACHME	88	MSC6100-35	SCREW,SHCS,M6X1.00X35
32	163900	ARM,UPPER CONTACT	89	171354	ASSEMBLY,UTILITY HOOK
33	MSC4070-16	SCREW,SHCS,M4X0.7X16	90	171342	WASHER,UTILITY HOOK
34	163903	BUSHING,TRIP COVER	91	171338	COVER,TRIP
35	163923	NOSE,F21PL	92	UB3811.2	PIN, SPIROL - 5/32X3/4
36	166772	SPRING,CONTACT ARM	93	171340	MOUNT,UTILITY HOOK
37	108224	CASTING,HOUSING CONTACT	94	171341	SPRING,UTILITY HOOK
38	142941	ARM,LOWER CONTACT	95	171339	HOOK,UTILITY
39	121072	ASSEMBLY,TRIP FOOT			
40	115230	SPRING,HOUSING			
41	166777	CASTING,PLUNGER			
42	MSC8125-30	SCREW,SHCS M8X30			
43	854004	WASHER,RUBBER-7			
44	163877	PAWL			
45	163878	SPRING,CHECK PAWL			
46	149882	PIN,CHECK PAWL			
47	163883	GUIDE,ARM			
48	SEQ7	KIT,SEQUENTIAL TRIP CONVERSION			
49	CNTK5	KIT,CONTACT TRIP CONVERSION			
50	100387	SPRING,COMPRESSION			
51	TVA6	KIT,TRIGGER VALVE			
52	171335	LABEL,WARNING,METAL CONNECTOR			
53	108562	SCREW,TRIGGER PIVOT			