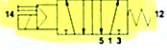


ELETTROVALVOLA 5/2 MONOSTABILE NAMUR - NAMUR SOLENOID VALVE 5/2 MONOSTABLE

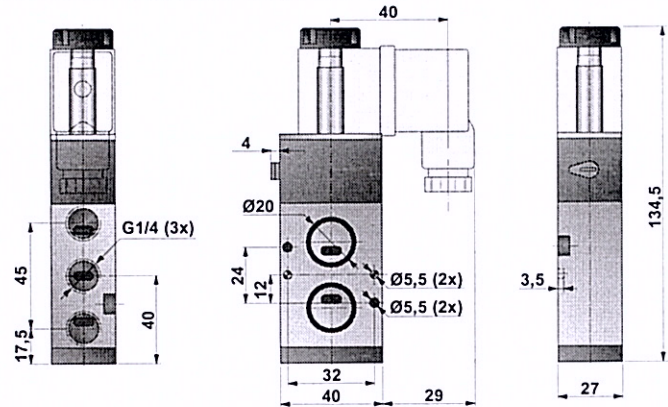
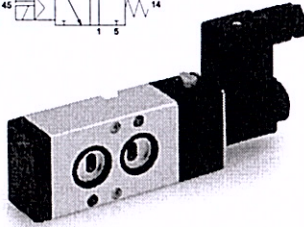
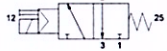
EN52M4



EN32M4A



EN32M4C

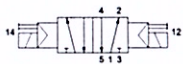


Massa - Mass: 240 g

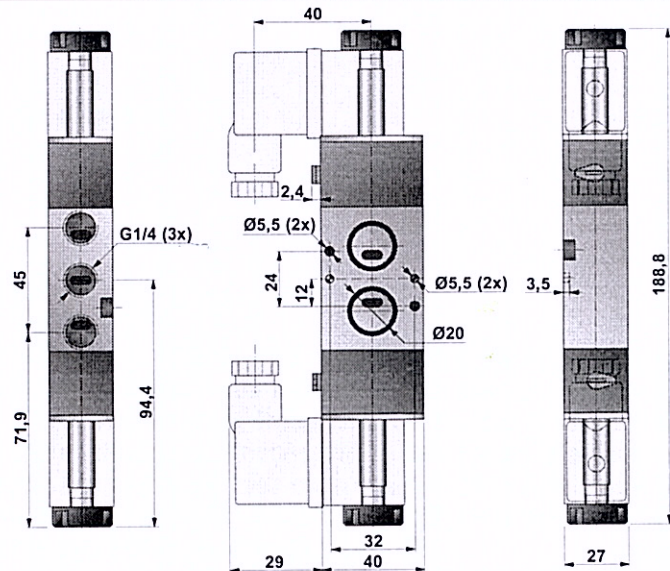
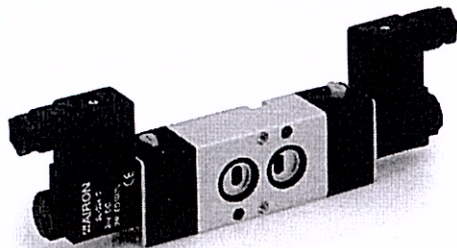
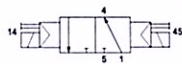
Connettori e solenoidi forniti a parte (vedere sezione 2-48 + 2-50).
Coils and connectors supplied separately (see section 2-48 + 2-50).

ELETTROVALVOLA 5/2 BISTABILE NAMUR - NAMUR SOLENOID VALVE 5/2 BISTABLE

EN52E4



EN32E4



Massa - Mass: 280 g

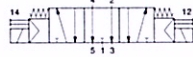
Connettori e solenoidi forniti a parte (vedere sezione 2-48 + 2-50).
Coils and connectors supplied separately (see section 2-48 + 2-50).

ELETTROVALVOLA 5/3 NAMUR - NAMUR SOLENOID VALVE 5/3

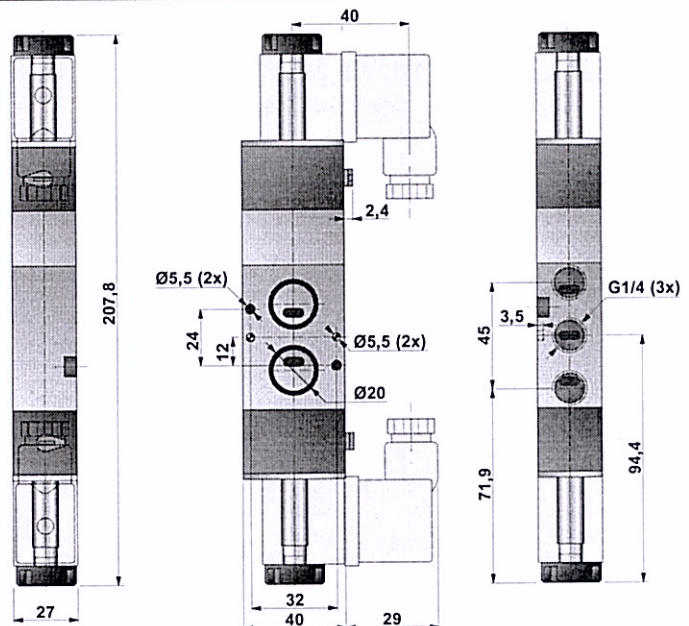
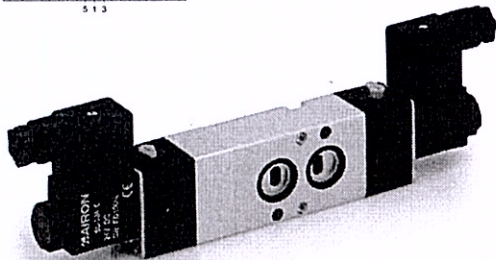
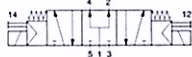
EN53E4C



EN53E4A



EN53E4P



Massa - Mass: 320 g

Connettori e solenoidi forniti a parte (vedere sezione 2-48 + 2-50).
Coils and connectors supplied separately (see section 2-48 + 2-50).