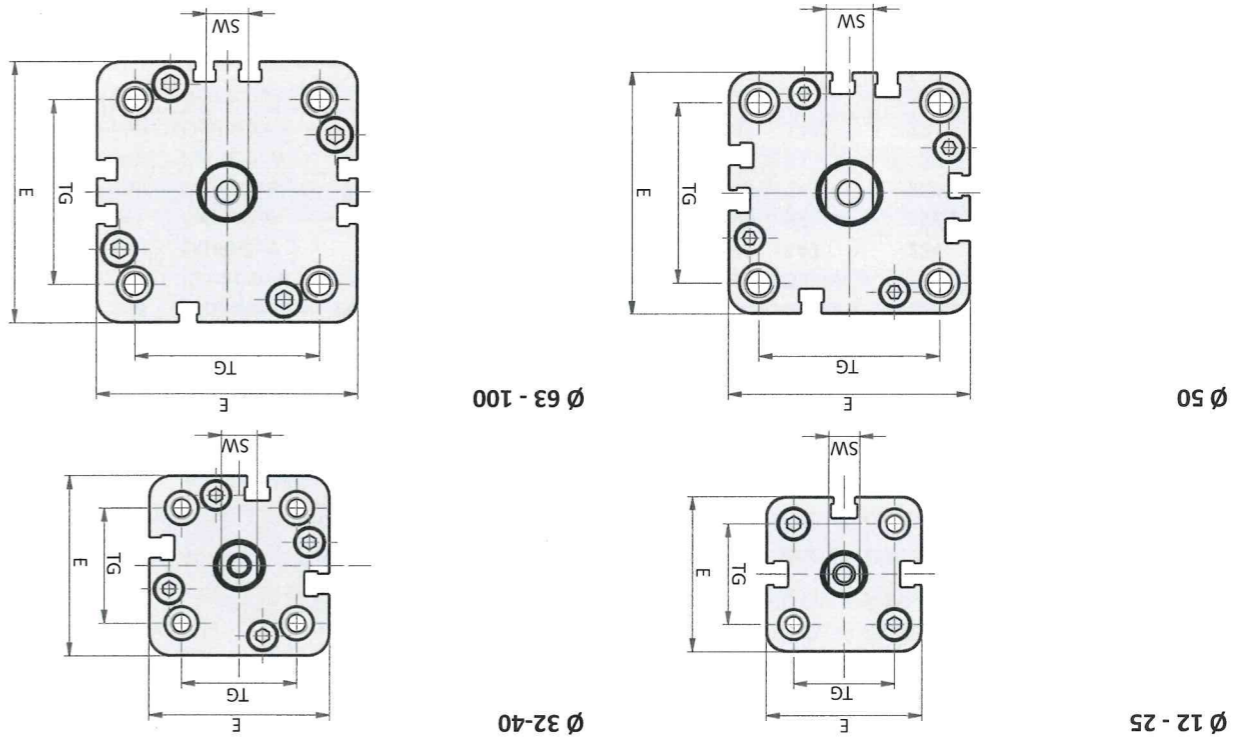


Series NXE
Single acting

Dimensions series NXE



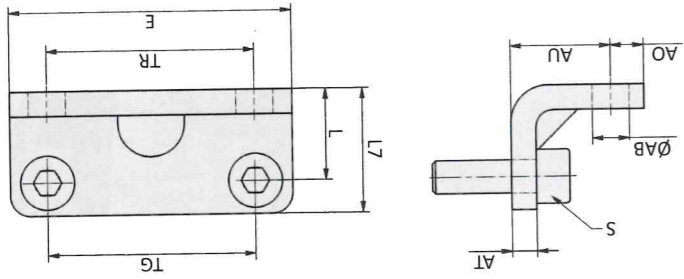
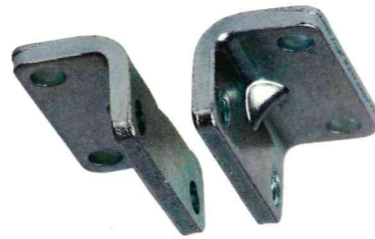
Piston Ø	A	Ø B	Ø C	Ø D	E	EE	KF	KK	L1	L2	L3	L8*	L8**	RT	SW	TG	WH	
12	16	6	6	8	6	8	M5	M3	6	6	4	3.5	3.8	4.8	M4	5	18	4.5
16	20	6	6	8	6	7.5	M5	M4	8	8	4	3.5	3.8	4.8	M4	6	18	4.5
20	22	6	6	7.5	10	7.5	M5	M5	10	10	4	4.5	3.8	4.8	M5	8	22	4.5
25	22	6	6	7.5	10	10	M5	M5	10	10	4	4.5	39.5	59.5	M5	8	26	5.5
32	22	6	6	9	12	12	M6	M6	12	12	4	5.5	44.5	64.5	M6	10	32	6
40	22	6	6	9	12	12	M6	M6	12	12	4	5.5	45.5	65.5	M6	10	42	6.5
50	24	6	6	10.5	16	16	M8	M8	16	16	4	6.5	45.5	65.5	M8	13	50	7.5
63	24	8	8	13.5	16	16	M8	M8	16	16	4	8.5	50	70	M10	13	62	7.5
80	32	8	8	13.5	20	20	M10	M10	20	20	4	8.5	56	86	M10	17	82	8
100	40	8	8	13.5	25	25	M12	M12	25	25	4	8.5	66.5	96.5	M10	22	103	10

* up to 30 mm stroke, ** from 35 mm stroke

Series NXD
Mounting accessories



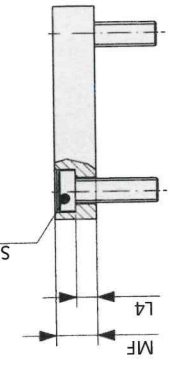
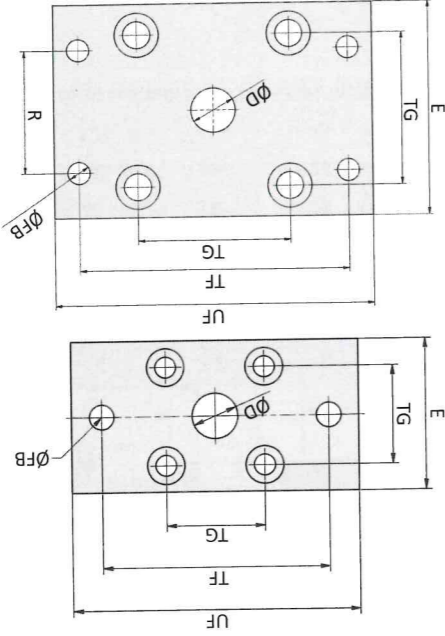
NXB-xxx-01 Foot mount



Model-no.:	Ø AB	AO	AU	AT	E	L	L7	S	TG	TR
NXB-100-01	13.5	12	33	8	123	26.5	38.5	M10 x 20	103	103
NXB-080-01	11	12	30	8	102	24.5	36.5	M10 x 20	82	82
NXB-063-01	11	12	27	6	84	28.5	39	M8 x 20	62	62
NXB-050-01	9	8	24	6	68	22	30	M8 x 20	50	50
NXB-040-01	9	8	20	5	60	21.5	29.5	M6 x 20	42	42
NXB-032-01	6.6	8	18	5	50	16	24	M6 x 20	32	32

Material: steel, zinc plated; 2 x 2 screws in accordance with EN ISO 4762 are included.

NXB-xxx-02 Flange mount



Model-no.:	Ø D	E	Ø FB	L4	MF	R	S	TF	TG	UF
NXB-016-02	10	29	5.5	4.6	10	-	M4 x 16	43	18	55
NXB-020-02	12	36	6.6	4.6	10	-	M5 x 20	55	22	70
NXB-025-02	12	40	6.6	4.6	10	-	M5 x 20	60	26	76
NXB-032-02	14	50	7	3.6	10	32	M6 x 20	65	32	80
NXB-040-02	14	60	9	3.6	10	36	M6 x 20	82	42	102
NXB-050-02	18	68	9	3.4	12	45	M8 x 25	90	50	110
NXB-063-02	18	87	9	4.4	15	50	M10 x 25	110	62	130
NXB-080-02	23	107	12	4.4	15	63	M10 x 25	135	82	160
NXB-100-02	28	128	14	4.4	15	75	M10 x 30	163	103	190

Material: steel, zinc plated; 4 screws in accordance with DIN 7984 are included.