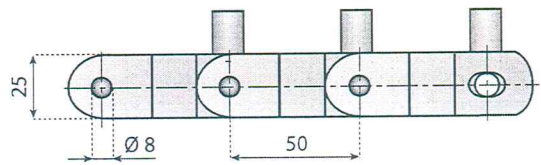
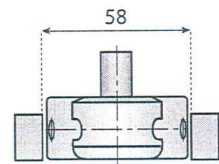
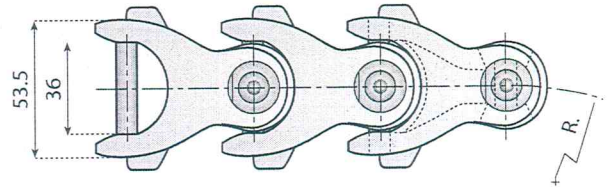
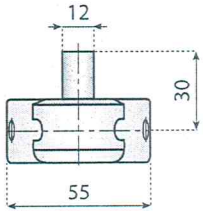
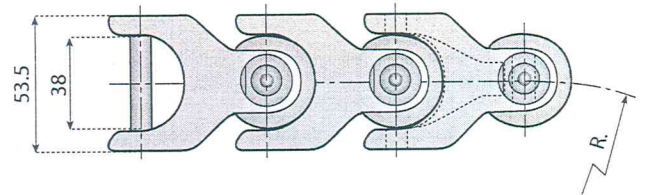


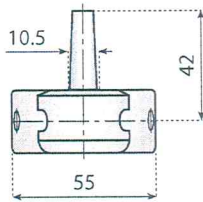
1701 TAB OP M



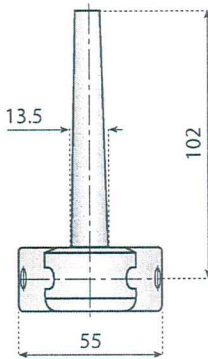
1702 M



M3 (pusher white)



M1 (pusher white)



M2 (pusher white)

MATERIAL Pages 4⇒7

Page 263

Page 270

Page 306

Pages 336⇒337

Pages 340⇒343

Pin Material: Austenitic Stainless Steel

Chain - Ref.	Code	Material Link	Pusher type	Breaking load N	R min.	Weight Kg/m
LFW - 1701 TAB OP M1	11964	LFW	M1	9.500	150	2.0
LFW - 1701 TAB OP M2	11965		M2			2.3
LFW - 1701 TAB OP M3	11966		M3			1.6
LFW - 1702 M1	11967		M1			2.0
LFW - 1702 M2	11968		M2			2.3
LFW - 1702 M3	11969		M3			1.6

Standard length: 61 pitches (10 ft. - 3.050 m)