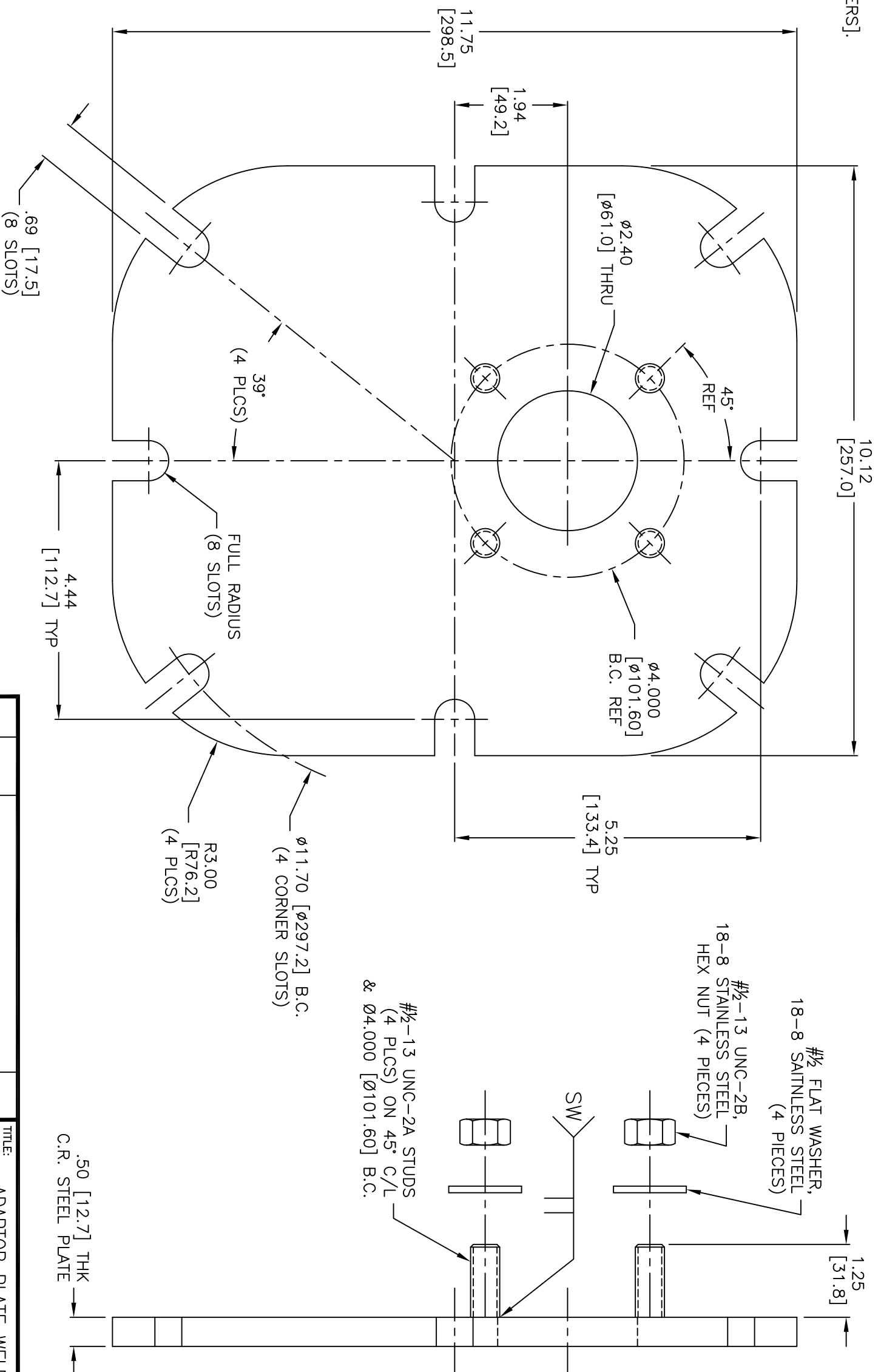




NOTES: (UNLESS OTHERWISE SPECIFIED)  
1. DIMENSIONS ARE IN INCHES [MILLIMETERS].



**NOTICE**

THIS DRAWING IS THE PROPERTY OF QUALITROL COMPANY, LLC AND IS LOANED ONLY ON THE CONDITION THAT IT WILL BE USED TO FACILITATE THE PURPOSE FOR WHICH IT WAS INTENDED AND NOT BE REPRODUCED, COPIED OR OTHERWISE DISPOSED OF. INFORMATION RELATIVE TO THE MAKING OF DRAWINGS, PARTS, APPARATUS OR PARTS THEREOF, EXCEPT BY WRITTEN ORDER FROM QUALITROL COMPANY, LLC.

LET	DATE	ALTERATION	C.N.
-	7/6/17	ROHS-REACH COMPLIANT	36690
-	10-13-14	NOTE NUTS & WASHERS AS 18-8 SS	32897
-	5-15-08	89 [17.5] (8 SLOTS) WAS .63 [16.0], 39° WAS 41°; REVISED STUD CALLOUT, ADDED 1.25 [31.8] HEIGHT	26736
-	11-9-07	RELEASED	26493

**TITLE:** ADAPTOR PLATE WELDMENT  
(for: ABB SPR to 900/910 FLANGE MOUNT)

**MATERIAL:**

**FINISH:** BLACK ZINC PLATE PER FS-105 (WELDMENT ONLY) ROHS-REACH COMPLIANT

TOLERANCE UNLESS NOTED, [MM] IS FOR REF.:  
2 P.L.C. DECIMAL  $\pm$  .02 [.5]  
3 P.L.C. DECIMAL  $\pm$  .005 [.13]  
ANGULAR  $\pm$  2 DEG.

FORM 0-467 REV. E 04/06/06  
**QUALITROL**  
FAIRPORT, NEW YORK

APP'D	DATE
CHKD R.M.PALAZZO	8-14-07
APP'D JAV	11-12-07
JAV	11-12-07

**SCALE:** 1:2

**SHEET:** 1 OF 1

**DRAWING NO.:** PLT-719-1