

# Housing Units

## Wide Blocks - Single / Medium

= For customers using industry standard products =  
 The part enclosed in the red frame is as per industry standard specifications (Outer cylinder EN 1.3505 Equiv. equivalent, Retainer resin). Consider these specifications while selecting the product.

**Features:** A design that reduces linear bushing assembly steps. Four mounting holes enable solid mounting with the load.

### Industry Standard

#### Single



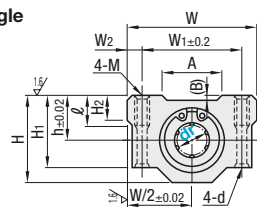
#### Medium



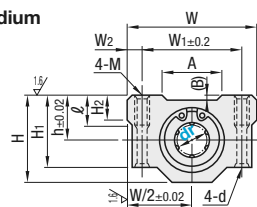
RoHS

Type		Linear Bushing Used		Housing		Ambient
Single	Medium	(P315)	(P317)	Material	Surface Treatment	Operating Temp.
LHBB	LHBD	LMU	LMUD	Aluminum Alloy	Clear Anodize	-20~ 80°C
LHBF	-	LMUF	-	-	-	-20~110°C

#### Single



#### Medium



**Features of Medium Type Bushings**  
 Body length is approximately 1.4 times of single type and allowable moment is approximately 4.3 times: suitable where there is no enough space for double type.

6.3 / (1.6 / )  
 (Housing)

dr	Tolerance		L		L1		h	H	H1	H2	W	W1	W2	M	d	ℓ	A	(B)	
	Single	Medium	Single	Medium	Single	Medium													
(5)	0	-0.008	18	-	12	-	7	14	11	-	22	16	3	M3	-	-	-	-	-
6	0	-0.010	25	35	15	24	9	18	15	6	30	20	5	M4	3.4	8	12	0.4	
8			30	43	18	28	11	22	18	-	34	24	-	-	-	-	16		
10			35	53	21	34	13	26	21	-	40	28	6	-	-	-	15.5		
12	0	-0.010	36	53	26	38	15	28	24	8	42	30.5	5.75	M5	4.3	12	17.5	0.85	
13			39		54	30	24.5	-	44	33	5.5	19							
16			44		63	34	48	19	38.5	32.5	9	50	36				7		21
20	0	-0.012	50	73	40	56	21	41	35	11	54	40	-	M6	5.2	-	21	0.5	
25			67	93	50	66	26	51.5	42	12	76	54	11				36		
30			72	100	58	70	30	59.5	49	15	78	58	10				39.9		
(35)	0	-0.012	80	-	60	-	34	68	54	18	90	70	-	M8	7	18	53	0.75	
(40)			90	-	60	-	40	78	62	20	102	80	-				61		
(50)			110	-	80	-	52	102	80	25	122	100	-				81		

For Precautions for Use, see P303. dr5 appearance will be different from the drawings above. dr ( ) are available for Single Type only.  
 The datum surface is located on the other side of product ID label.

# Housing Units

## Wide Blocks - Double / Medium Long / Long

= For customers using industry standard products =  
 The part enclosed in the red frame is as per industry standard specifications (Outer cylinder EN 1.3505 Equiv. equivalent, Retainer resin). Consider these specifications while selecting the product.

**Features:** A design that reduces linear bushing assembly steps. Four mounting holes enable solid mounting with the load.

### Industry Standard

#### Double



#### Medium Long



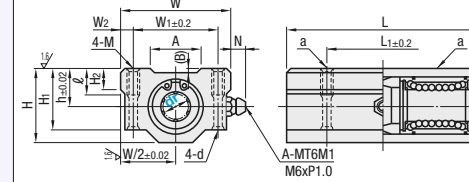
#### Long



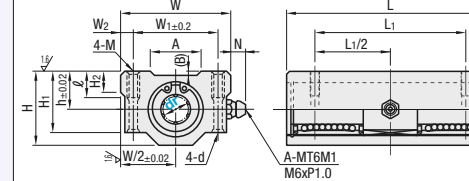
RoHS

Type			Linear Bushing Used	Housing		Ambient
Double	Medium Long	Long	(P315)	Material	Surface Treatment	Operating Temp.
LHBBW	LHBS	LHBL	LMU	Aluminum Alloy	Clear Anodize	-20~ 80°C
LHBBWF	-	-	LMUF	-	-	-20~110°C

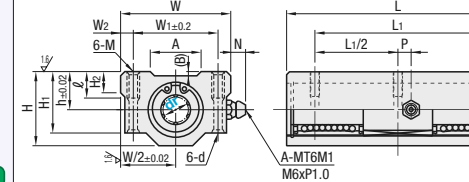
#### Double



#### Medium Long



#### Long



**Features of Double Type**  
 Body length is approximately 1.9 times of the type and allowable moment is approximately 6 times.

**Features of Medium Long Type**  
 Body length is approximately 2.2 times of single type and allowable moment is approximately 10 times; suitable where no space for long type is available.

**Features of Long Type**  
 Body length is approximately 2.7 times of the single type. Allowable moment is approximately 21 times.

6.3 / (1.6 / )  
 (Housing)

dr	Tolerance			L			L1			h	H	H1	H2	W	W1	W2	M	d	ℓ	A	(B)	N	P
	Double	Medium Long	Long	Double	Medium Long	Long	Double	Medium Long	Long														
(5)	0	-0.008	-	33	-	25	-	7	14	11	-	22	16	3	M3	-	-	-	-	-	-	-	-
(6)	0	-0.010	-	48	-	36	-	9	18	15	6	30	20	5	M4	3.4	8	12	0.4	7.5			
(8)				58	-	42	-	11	22	18	-	34	24	-	-	-	-	16					
(10)				68	-	46	-	70	13	26	21	-	40	28	6	-	-	-			15.5		
12	0	-0.012	-	70	-	96	-	15	28	24	8	42	30.5	5.75	M5	4.3	12	17.5	0.85	7	7		
13				75	-	103	-	78	30	24.5	-	44	33	5.5				19					
*16				85	100	118	60	74	88	19	38.5	32.5	9	50				36				7	19.8
*20	0	-0.015	-	96	115	134	70	84	100	21	41	35	11	54	40	7	21	0.5	7.5	8			
*25				130	160	185	100	118	138	26	51.5	42	12	76	54	11	36	1	4.5	9			
*30				140	170	200	110	130	150	30	59.5	49	15	78	58	10	39.9	0.75	5.5	-			
(35)	0	-0.018	-	155	-	120	-	34	68	54	18	90	70	-	M6	5.2	-	53	0.85	6.5			
(40)				175	-	140	-	40	78	62	20	102	80	-				61					
(50)				215	-	160	-	52	102	80	25	122	100	-				81					

For Precautions for Use, see P303. dr ( ) is only available for Double Type, only sizes with \* are available for Medium Long Type. dr5 appearance will be different from the drawings above.  
 Grease fitting is not available on Double Type dr5. There will be dowel holes on "a" locations for dr50. The datum surface is located on the other side of product ID label.

Part Number	Unit Price			
	Single	Medium	Medium	
Type	dr	LHBB	LHBF	LHBD
(Single) LHBB LHBF	5	-	-	-
	6	-	-	-
	8	-	-	-
	10	-	-	-
	12	-	-	-
	13	-	-	-
(Medium) LHBD	16	-	-	-
	20	-	-	-
	25	-	-	-
	30	-	-	-
35	-	-	-	
40	-	-	-	
50	-	-	-	

dr	Basic Load Rating				Allowable Static Moment (N·m)		Mass (g)	
	C (Dynamic) N		Co (Static) N		Single	Medium	Single	Medium
	Single	Medium	Single	Medium	Single	Medium	Single	Medium
5	167	-	206	-	-	-	14	-
6	206	226	265	310	-	1.42	34	48
8	265	310	380	452	-	2.12	52	78
10	372	508	549	718	-	4.37	92	142
12	412	634	598	814	-	6.2	102	144
13	510	640	784	826	-	6.2	120	172
16	775	1164	1180	1448	-	13.1	220	323
20	882	1554	1370	2068	-	18.3	255	382
25	980	1725	1570	3068	-	25.3	600	866
30	1570	2440	2740	3974	-	42.7	735	1061
35	1670	-	3140	-	-	-	1100	-
40	2160	-	4020	-	-	-	1590	-
50	3820	-	7940	-	-	-	3340	-

kgf=Nx0.101972

Part Number	Unit Price			
	Double	Medium Long	Long	Long
Type	dr	LHBBW	LHBS	LHBL
(Double) LHBBW LHBS SLHBBW SLHBS	5	-	-	-
	6	-	-	-
	8	-	-	-
	10	-	-	-
	12	-	-	-
	13	-	-	-
(Medium Long) LHBS	16	-	-	-
	20	-	-	-
	25	-	-	-
	30	-	-	-
35	-	-	-	
40	-	-	-	
50	-	-	-	

dr	Basic Load Rating				Allowable Static Moment (N·m)		Mass (g)		
	C (Dynamic) N		Co (Static) N		Double	Medium Long	Double	Medium Long	
	Double	Medium Long	Double	Medium Long	Double	Medium Long	Double	Medium Long	
5	263	-	-	412	-	-	-	27	-
6	324	-	-	529	-	-	2.18	8.2	63
8	431	-	-	784	-	-	4.31	16.0	102
10	588	-	588	1100	-	1100	7.24	27.0	180
12	657	-	657	1200	-	1200	10.9	40.1	205
13	813	-	813	1570	-	1570	11.6	42.9	240
16	1230	1230	1230	2350	2350	19.7	25.5	73.5	400
20	1400	1400	1400	2740	2740	27.4	26.8	35.0	570
25	1560	1560	1560	3140	3140	31.4	43.4	63.1	157
30	2490	2490	2490	5490	5490	54.9	82.8	106	297
35	2650	-	-	6270	-	-	110	-	373
40	3430	-	-	8040	-	-	147	-	553
50	6080	-	-	15900	-	-	397	-	6700

kgf=Nx0.101972

Ordering Example  
 Part Number

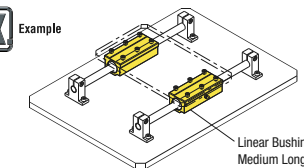
- LHBB12 (L Type Greased)
- LHBD16 (G Type Greased)
- LHBD16G (H Type Greased)
- LHBD20H (H Type Greased)

Alternative grease types available.  
 For Days to Ship, Price and Performance, see P304

Ordering Example  
 Part Number  
 LHBBW12 (L Type Greased)  
 LHBBW12L (G Type Greased)  
 LHBBW16G (H Type Greased)  
 LHBL20H (H Type Greased)

Alternative grease types available.  
 For Days to Ship, Price and Performance, see P304

Ordering Example



Linear Bushing Housing Units  
 Medium Long