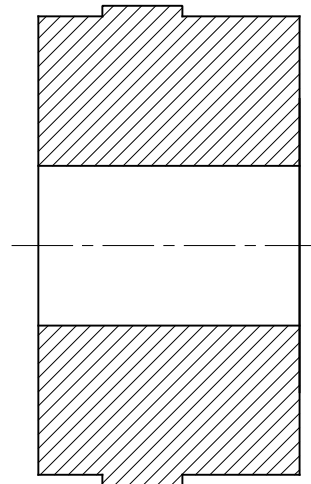
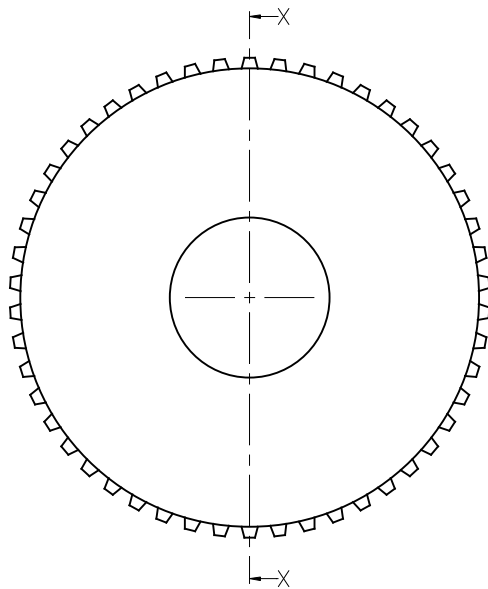


RevNo	Revision note	Date	Signature	Checked

A
B
C
D



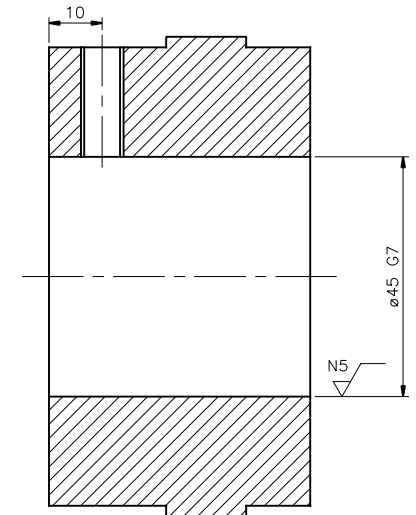
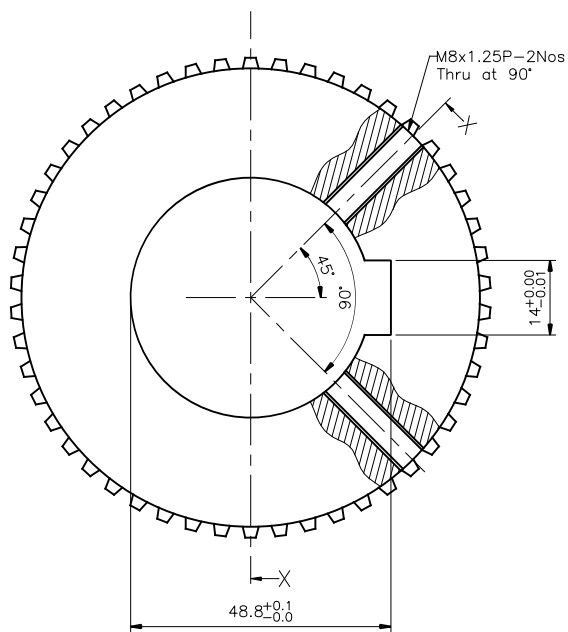
SECTION X-X

CMA1

Geared Coupling:
Part No. : 1015G
Make : REXNORD
Male Coupling 1 of 2

NOTE: DO NOT PROCESS.
WAIT FOR THE DRIVE MOTOR SHAFT
DIMENSIONS.

A
B
C
D



SECTION X-X

CMA2

Geared Coupling:
Part No. : 1015G
Make : REXNORD
Male Coupling 2 of 2

Operation:
* Boring
* Cylindrical Grinding
* Keyway Cutting

No sharp edges.
All corners are 1x45° chamfer.

TOLERANCE G7 : +09 TO +34 μm

DEVIATIONS FOR OPEN DIMNS. AS PER IS:2012 (PART 1) MEDIUM CLASS										SURFACE FINISH SYMBOLS													
DIMN.	OVER	-	6	30	120	400	1000	2000	>4000	ROUGHNESS GRADE No.	N1	N2	N3	N4	N5	N6	N7	N8	N9	N10	N11	N12	
	UPTO & INCL.	6	30	120	400	1000	2000	4000		ROUGHNESS VALUE μm	0.025	0.05	0.1	0.2	0.4	0.8	1.6	3.2	6.3	12.5	25	50	
TOLERANCE	±0.1	±0.2	±0.3	±0.5	±0.8	±1.2	±2	±3															

PYRAMID PRECISION ENGINEERING INDIA PVT LTD



3/79, PKS GARDENS,
EVR PERIYAR ROAD
PALAVAKAM CHENNAI-600 041
Website : www.ppeindia.com
E-Mail : info@ppeindia.com
PH:-91 4424922257

DRAWN BY: ANITH	DESIGN BY: P.M.V	CHECKED BY: THANIGAI
PLACE CHENNAI	DATE 29-06-2015	SIGNATURE

MATERIAL:	-	QUANTITY:	1No
ALL DIMENSIONS ARE IN MM			
40kgm ² SMALL SCALE TESTING MACHINE			
MOTOR SHAFT GEAR COUPLING			
SIZE: A3	SCALE: NTS	SHEET: 2 OF 2	
JOB No.	DRAWING No. SSTM-EREN-01-2015-P-15/A	REV.	

A
B
C
D
E
F