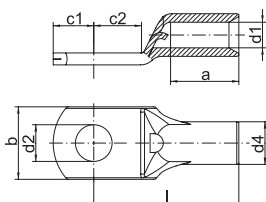




## Tubular cable lugs, Cu, standard type



- ▶ Cable lug for fine-stranded round conductors, e.g. to DIN EN 60228 Cl. 5
- ▶ Simple processing thanks to inspection hole for monitoring full conductor insertion

### Characteristics

- Annealed material optimises material and crimping properties
- Simple and safe connection due to flat contact surfaces and internal chamfer
- Item identification on cable lug

### Material

- Copper (EN13600)

### Surface

- Tin-plated to protect against corrosion

### Technical instructions

- Tool: see page 38

Nominal cross section mm <sup>2</sup>	Size of bolt dia.	Part No.	Dimension mm								Weight/100 pcs. ~ kg	Packing unit/pcs
			d1	a	b	d2	d4	c1	c2	l		
0.75	M3	<b>91R3</b>	1.3	6	6.0	3.2	2.8	3.25	4.0	12	0.060	100
	M4	<b>91R4</b>	1.3	6	6.5	4.3	2.8	4.00	5.0	13	0.060	100
	M5	<b>91R5</b>	1.3	6	7.5	5.3	2.8	4.75	5.5	14	0.060	100
1.5	M3	<b>92R3</b>	1.8	6	6.5	3.2	3.3	3.25	4.0	12	0.080	100
	M4	<b>92R4</b>	1.8	6	6.5	4.3	3.3	4.00	5.0	13	0.080	100
	M5	<b>92R5</b>	1.8	6	7.5	5.3	3.3	4.75	5.5	14	0.080	100
	M6	<b>92R6</b>	1.8	6	9.0	6.5	3.3	6.50	6.5	16	0.090	100
2.5	M3	<b>93R3</b>	2.3	6	7.5	3.2	4.2	3.25	4.0	12	0.120	100
	M4	<b>93R4</b>	2.3	6	7.5	4.3	4.2	4.00	5.0	13	0.120	100
	M5	<b>93R5</b>	2.3	6	8.5	5.3	4.2	4.75	5.5	14	0.130	100
	M6	<b>93R6</b>	2.3	6	9.5	6.5	4.2	6.50	6.5	16	0.150	100
	M8	<b>93R8</b>	2.3	6	13.0	8.5	4.2	7.75	9.5	20	0.180	100
4	M4	<b>94R4</b>	3.0	8	8.5	4.3	5.0	4.75	5.5	18	0.210	100
	M5	<b>94R5</b>	3.0	8	9.0	5.3	5.0	4.75	6.0	18	0.213	100
	M6	<b>94R6</b>	3.0	8	10.0	6.5	5.0	6.50	6.5	19	0.220	100
	M8	<b>94R8</b>	3.0	8	13.0	8.5	5.0	8.50	9.5	22	0.280	100
6	M4	<b>95R4</b>	4.0	9	9.5	4.3	6.0	5.00	5.5	18	0.290	100
	M5	<b>95R5</b>	4.0	9	9.5	5.3	6.0	6.00	6.0	19	0.300	100
	M6	<b>95R6</b>	4.0	9	10.0	6.5	6.0	7.00	6.5	19	0.300	100
	M8	<b>95R8</b>	4.0	9	14.0	8.5	6.0	8.50	9.5	22	0.320	100