

SC100 series



Seismic sensor

The SC100 range of Seismic sensors is designed to detect specific vibrations arising from attempts to penetrate high value storage units, protecting them against intrusion.

The SC100 model is a universal seismic sensor which can be used to protect Vaults, Doors, fixed ATMs, Safes and other solid structures.

The SC105 is a dedicated version for portable ATMs, ticket or vending machines that are situated in noisy

environments. It offers the optimum sensitivity/false alarm immunity ratio for such free-standing objects.

The SC100 series offers several unique features that reduce installation time including integrated EOL resistors, a built-in diagnostic tool and the smallest footprint available on market.

Features:

- **Detects attacks on:** ATMs, night deposit safes, free standing safes, vault doors, strong room vaults, modular vaults, vending machines, hatches, gates, chests, gun cabinets and other solid structures.
- **Detects attacks from items such as:**
 - Sledgehammers or explosives
 - Repeated blows from hammers and chisels
 - Drilling with normal and water-cooled diamond drills; cutting with mechanical, thermal and water jet cutting tools; penetration by oxy/acetylene torches and thermal lances
 - Hydraulic jacks
- **Smallest sensor:** Smallest available on the market so easier to fit when space is limited.
- **Universal (ATM& vault):** The SC100 can also be used for ATM's and night deposit safes using a simple dip switch setting where others use separate sensors.
- **Drilling shield (standard):** Protects internal electronics against sabotage.
- **Extended temperature range:** Allows operation in extreme temperature conditions (-40°C to +70°C).
- **Remote sensitivity reduction input:** Allows remote adjustment of sensor sensitivity during ATM servicing to avoid false alarms.
- **Universal mounting plate:** Uses most pre-drilled mounting holes thus eliminating time consuming drilling/threading. Also makes refurbishment easier. In addition, the same mounting plate can be used for both mounting on concrete and welding on steel.
- **Integrated EOL resistors:** Saves installation time as End Of Line resistors for both alarm and tamper loop are built into the sensor and DIP-switch selectable. This also reduces future requirements for servicing arising from faulty EOL resistor connections.
- **Integrated temperature alarm:** Alarm triggers on both SC100 and SC105 sensors if the local temperature exceeds 85°C. Additionally the SC100 version alarms when temperature rises faster than 6°C per minute. This helps detect attacks by oxy/acetylene torches and thermic lances.
- **Diagnostic LED:** A built-in tool enables easy selection of the correct sensitivity setting, removing the need for time consuming external tools.
- **Selectable sensitivity:** Four different sensitivity settings available to adapt to required range and environmental conditions.
- **Remote test electronics / test transmitter:** Input to remotely start functional test using the SC113 (internal) test transmitter or SC115 (external) test transmitter
- **Available accessories:** Mounting plate, keyhole protection kit, Day/Night kit, Test transmitter (internal), Test transmitter (external) and armed cable; This range of accessories allows the SC100 and SC105 Seismic sensors to be installed in a wide range of applications.
- **Low current consumption:** Typically 3mA @ 12VDC

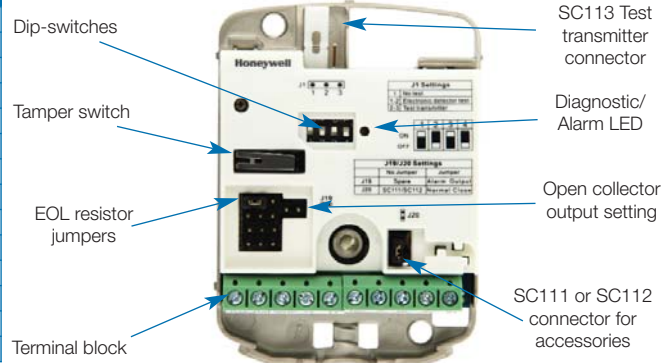
SC100 series

Seismic sensors

Specifications		SC100	SC105
Power Requirements	Supply Voltage	8 – 16 VDC, nominal 12 VDC	
	Current Consumption	Typical 3 mA @ 12 VDC	
Sensitivity	Adjustable Sensitivity	4 levels by DIP Switches	
	ATMs / Vault Selection	by DIP switch	N/A
	Delayed Triggering	N/A	by DIP switch
	Reduced Sensitivity Input	For maintenance & Service: Active low (<1.5 VDC)	
	Detection Radius	5m	3m
	Alarm algorithm	Highly sensitive to all known attacks while rejecting known false alarm sources by innovative filters and firmware	Equal to SC100 but adapted to higher environmental noise of public areas where protected objects mainly are installed to prevent unwanted alarms
Alarm Outputs	Solid State Relay (Change Over)	30 VDC / 100 mA; Type C	30 VDC / 100 mA; Type A
	Open Collector	Active low during alarm	
	Alarm Hold Time	Approx. 2.5 secs	
Sabotage Protection	Pry-off and Cover Switch	30 VDC / 100 mA	
	Low Supply Voltage Alarm *	< 7 VDC	
	Temperature Alarm *	+85°C ± 5°C	
	Internal Functional Alarm*	Stainless steel drill shield	
Inputs	Remote test	Active low 1.5 VDC, test duration < 0.5 sec	
	Reduced Sensitivity Input	Active low 1.5 VDC, test duration < 0.5 sec Sensitivity reduction to 12.5 %	
Installation Tool	A noise and alarm indicator is incorporated to support sensitivity setting.		
Environmental Conditions	Maximum Humidity	95% RH (non-condensing)	
	Operating Temperature	-40°C – + 70°C	
	Storage Temperature	-50°C – + 70°C	
	Environmental Class (VdS)	III	
	Housing Protection Category	IP43	
Housing	Dimensions (H x W x D)	80 mm x 60 mm x 21 mm	
	Chassis and Cover	Die-cast metal	
	Colour	RAL7035 (light grey)	
	Weight	228g	

Honeywell reserves the right to alter the specification of products without notice.

Applications	SC100	SC105
Vault Doors	✓	
ATMs	✓	
Night Deposit Safes	✓	
Strong Room Vaults	✓	
Modular Vaults	✓	
Free Standing Safes	✓	
Hatches	✓	
Gates	✓	✓
Chests	✓	✓
Lobby-ATMs		✓
Filing Cabinets		✓
Containers		✓
Vending machines		✓
Ticket machines		✓



SC100 series accessories



SC110



SC111



SC112



SC113



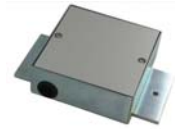
SC114



SC115



SC116



SC117



SC118

Ordering references:

SC100	Seismic sensor (see table above)	SC114	1.80m armed cable kit (8 wires)
SC105	Seismic sensor (see table above)	SC115	External test transmitter
SC110	Mounting plate	SC116	Wall recess mounting kit
SC111	Movable mounting kit	SC117	Floor recess mounting kit
SC112	Keyhole protection kit	SC118	Spacer for SC112
SC113	Internal test transmitter		

Find out more:

www.honeywell.com/security/uk

Fax: +44 (0) 1698 738300

email: HSUK64SalesTeam@Honeywell.com

Honeywell Security Group

Newhouse Industrial Estate

Motherwell - Lanarkshire

ML1 5SB - Scotland

Tel: +44 (0) 1698 738200

Ampèrestraat 41

1446 TR Purmerend

Nederland

Tel: +31 (0) 299-410200

www.honeywell.com

HSC-SC10X-02-EN(1210)DS-G
December 2010

© 2010 Honeywell International Inc.

Honeywell